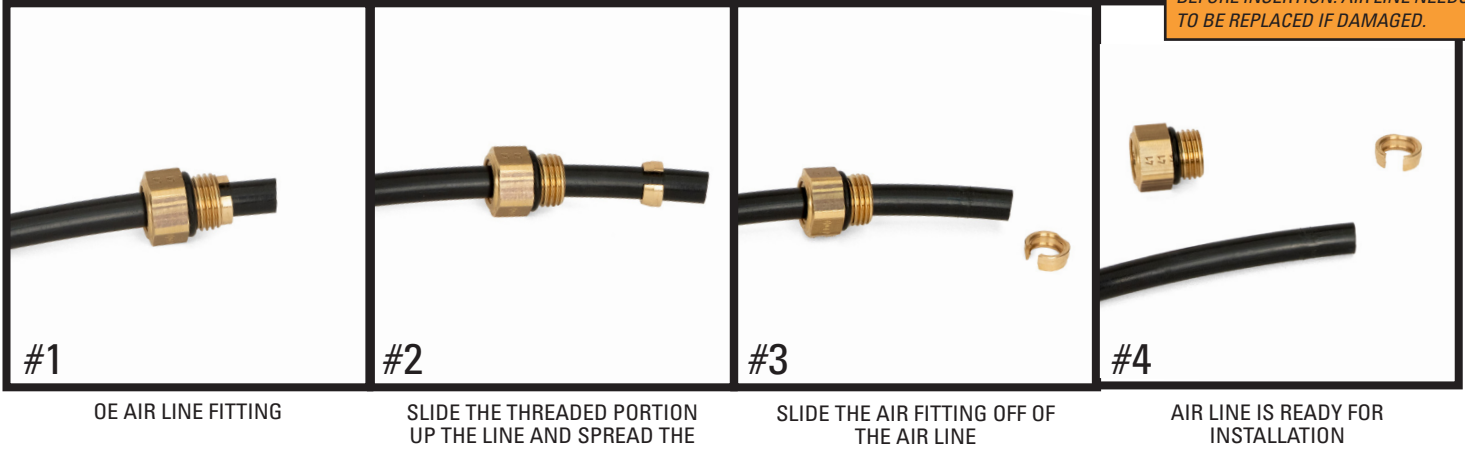


### REMOVAL



Prior to inserting the existing air line into the new air fitting you will need to remove the old original equipment air line fitting.

**NOTE:** SCRATCHES AND/OR DEEP CUTS IN THE AIR LINE CAN RESULT IN POSSIBLE LEAKS. INSPECT THE AIR LINE BEFORE INSERTION. AIR LINE NEEDS TO BE REPLACED IF DAMAGED.



#1

OE AIR LINE FITTING

#2

SLIDE THE THREADED PORTION UP THE LINE AND SPREAD THE COLLET OPEN TO REMOVE

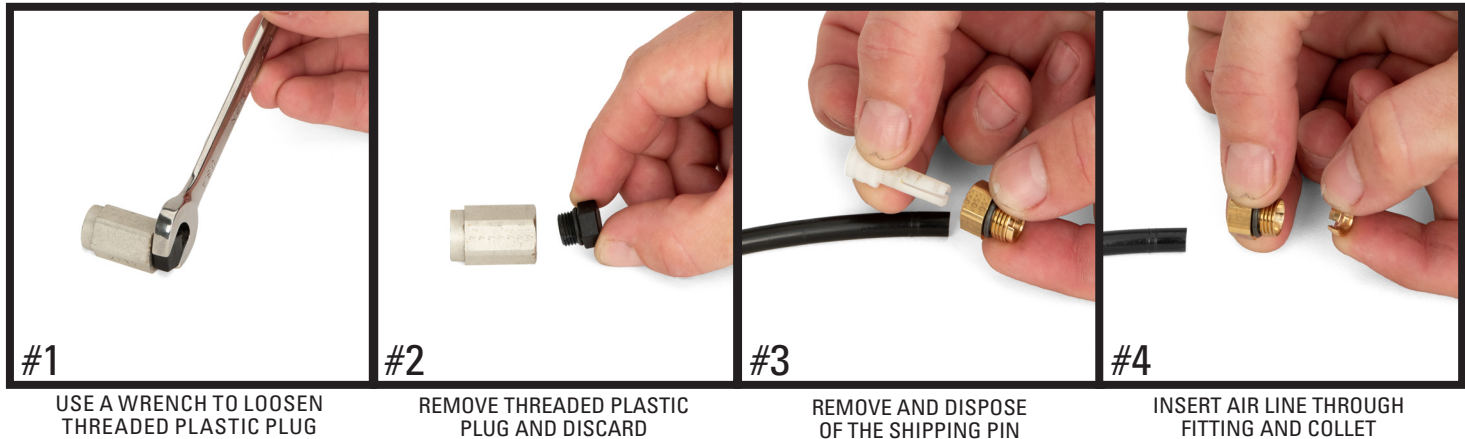
#3

SLIDE THE AIR FITTING OFF OF THE AIR LINE

#4

AIR LINE IS READY FOR INSTALLATION

### INSTALLATION - USING THE NEW AIR LINE FITTING PROVIDED IN THE KIT



#1

USE A WRENCH TO LOOSEN THREADED PLASTIC PLUG

#2

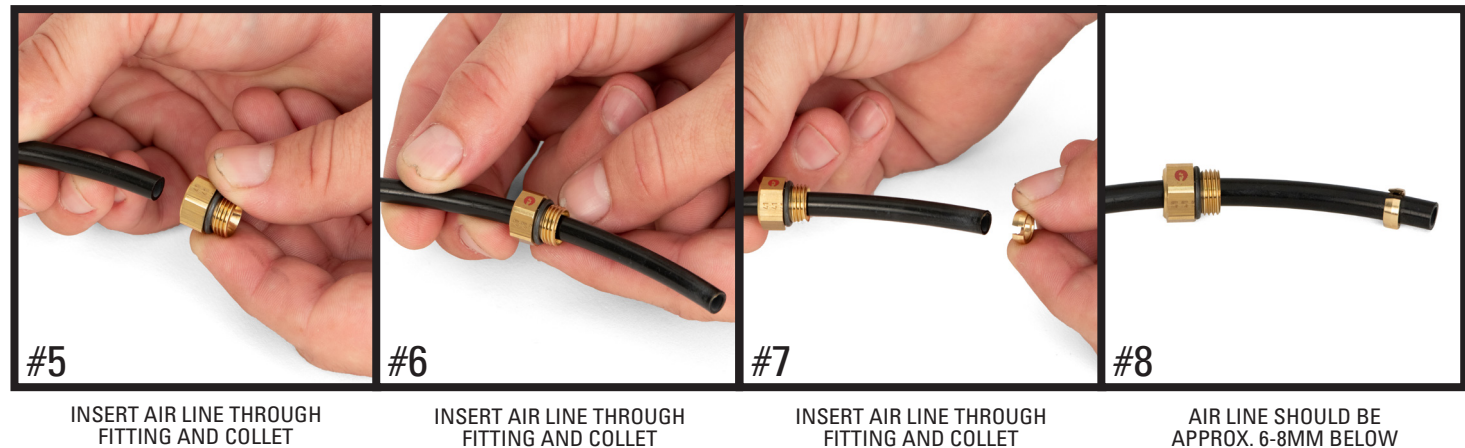
REMOVE THREADED PLASTIC PLUG AND DISCARD

#3

REMOVE AND DISPOSE OF THE SHIPPING PIN

#4

INSERT AIR LINE THROUGH FITTING AND COLLET



#5

INSERT AIR LINE THROUGH FITTING AND COLLET

#6

INSERT AIR LINE THROUGH FITTING AND COLLET

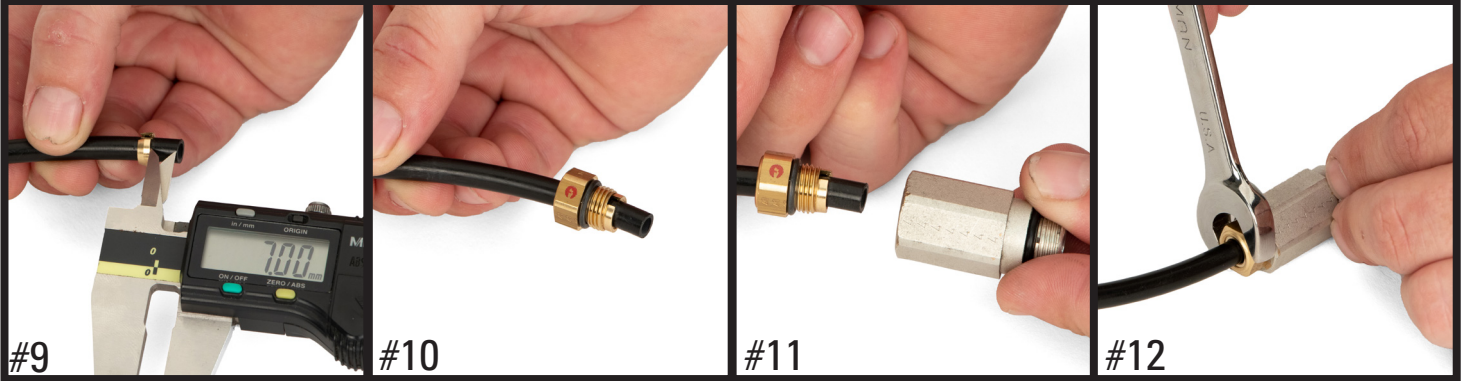
#7

INSERT AIR LINE THROUGH FITTING AND COLLET

#8

AIR LINE SHOULD BE APPROX. 6-8MM BELOW COLLET

**Arnett® is committed to the quality of its products. If you have a question or problem with any Arnett product, please contact Arnett by calling 800-251-8993 during normal business hours or email [techassistance@arnottinc.com](mailto:techassistance@arnottinc.com). (In the EU please call +31 (0)73 7850 580 or email [info@arnotteurope.com](mailto:info@arnotteurope.com))**



#9

AIR LINE SHOULD BE APPROX. 6-8MM BELOW COLLET

#10

PULL AIR FITTING OUTWARD TO LOCK COLLET

#11

INSERT FITTING AND AIR LINE INTO VALVE

#12

TIGHTEN FITTING TO APPROX. 3.5NM (31 IN-LBS/2.5 FT-LBS)

Arnett® is committed to the quality of its products. If you have a question or problem with any Arnett product, please contact Arnett by calling [800-251-8993](tel:800-251-8993) during normal business hours or email [techassistance@arnottinc.com](mailto:techassistance@arnottinc.com).