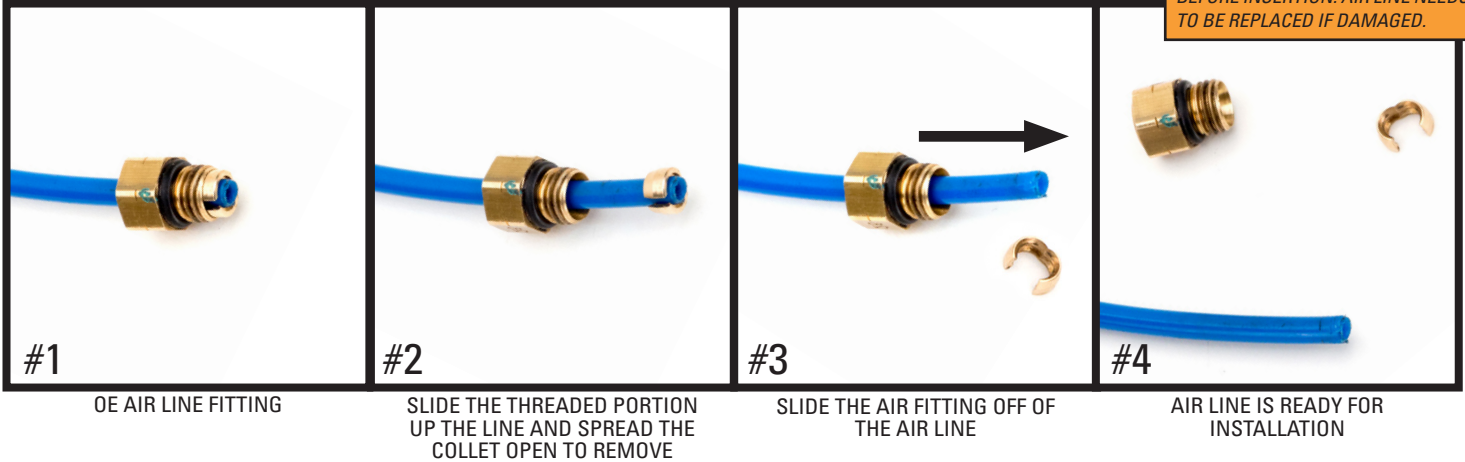


REMOVAL



Prior to inserting the existing air line into the new air fitting you will need to remove the old original equipment air line fitting.

NOTE: SCRATCHES AND/OR DEEP CUTS IN THE AIR LINE CAN RESULT IN POSSIBLE LEAKS. INSPECT THE AIR LINE BEFORE INSERTION. AIR LINE NEEDS TO BE REPLACED IF DAMAGED.



#1

OE AIR LINE FITTING

#2

SLIDE THE THREADED PORTION UP THE LINE AND SPREAD THE COLLET OPEN TO REMOVE

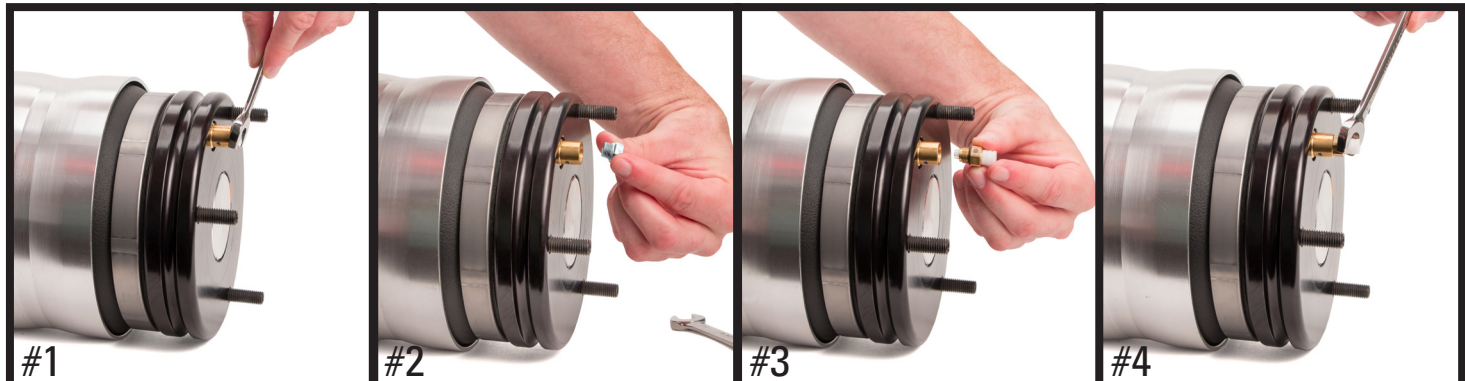
#3

SLIDE THE AIR FITTING OFF OF THE AIR LINE

#4

AIR LINE IS READY FOR INSTALLATION

INSTALLATION - USING THE NEW AIR LINE FITTING PROVIDED IN THE KIT



#1

USE A WRENCH TO LOOSEN THREADED PLUG

#2

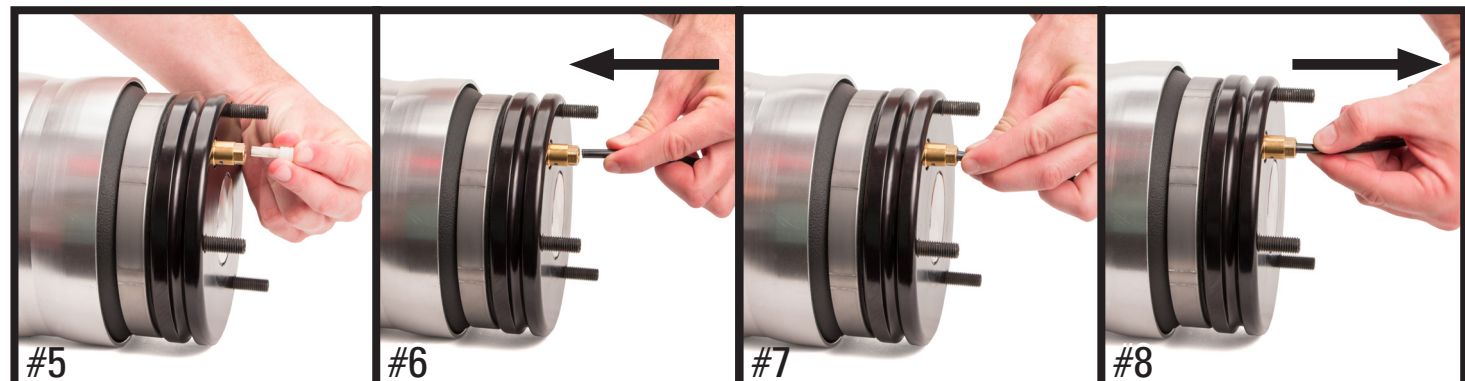
REMOVE THREADED PLUG AND DISCARD

#3

THREAD THE INCLUDED AIR LINE FITTING INTO THE VALVE

#4

TIGHTEN FITTING TO APPROX. 2NM (18 IN-LBS/1.5 FT-LBS)



#5

REMOVE AND DISPOSE OF THE SHIPPING PIN

#6

INSERT AIR LINE INTO THE AIR LINE FITTING UNTIL IT STOPS

#7

AIR LINE INSERTED

#8

GENTLY PULL ON AIR LINE TO CONFIRM IT IS FULLY SECURED BY THE AIR LINE FITTING

Arnett® is committed to the quality of its products. If you have a question or problem with any Arnett product, please contact Arnett by calling 800-251-8993 during normal business hours or email techassistance@arnottinc.com. (In the EU please call +31 (0)73 7850 580 or email info@arnotteurope.com)