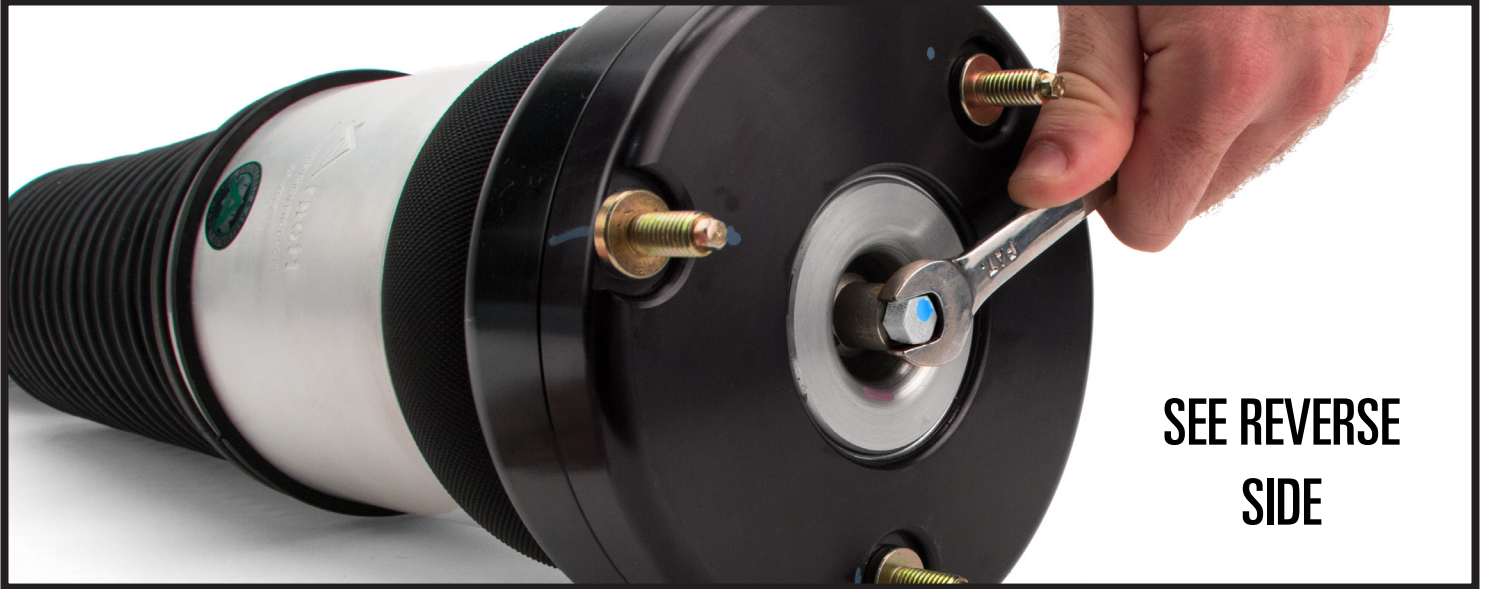


Remove the threaded plug and discard.



This product ships pressurized; prior to installation please ensure it is properly inflated by pressing on the exposed portion of the air spring. The air spring should be firm and resemble the image below. If the air spring is not inflated or does not resemble the image below, please contact your authorized retailer.



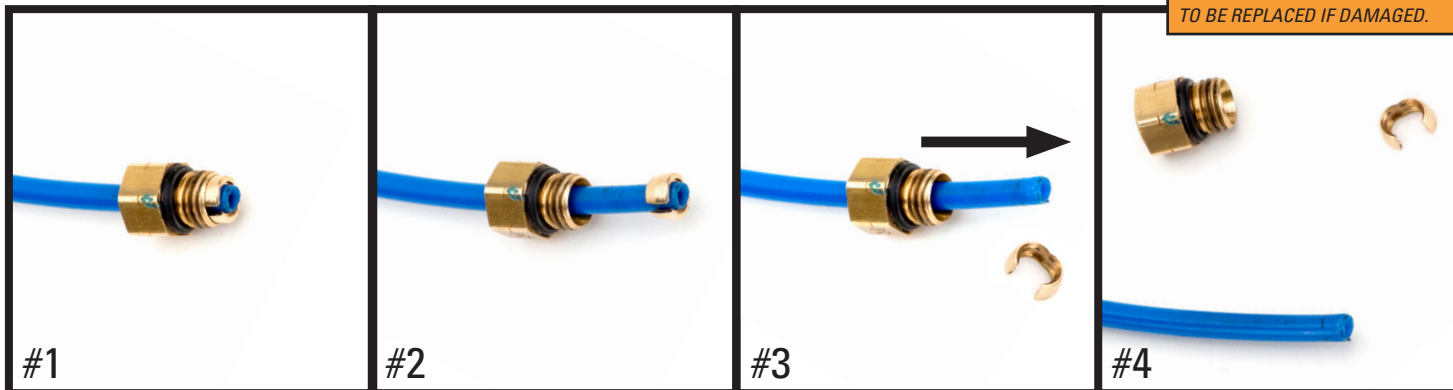
Arnett® is committed to the quality of its products. If you have a question or problem with any Arnett product, please contact Arnett by calling 800-251-8993 during normal business hours or email techassistance@arnottinc.com. (In the EU please call +31 (0)73 7850 580 or email info@arnotteurope.com)

REMOVAL



Prior to inserting the existing air line into the new air fitting you will need to remove the old original equipment air line fitting.

NOTE: SCRATCHES AND/OR DEEP CUTS IN THE AIR LINE CAN RESULT IN POSSIBLE LEAKS. INSPECT THE AIR LINE BEFORE INSERTION. AIR LINE NEEDS TO BE REPLACED IF DAMAGED.



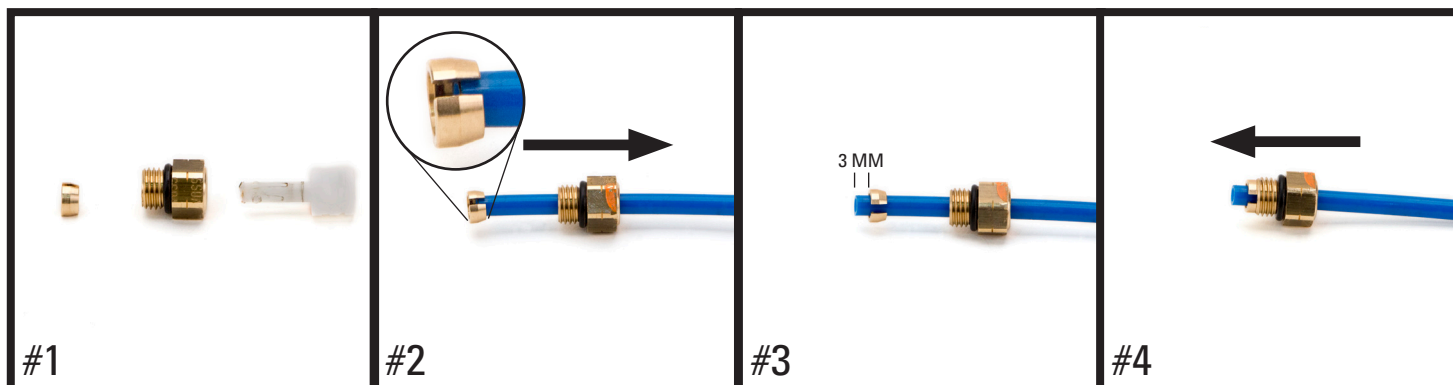
#1 OE AIR LINE FITTING

#2 SLIDE THE THREADED PORTION UP THE LINE AND SPREAD THE COLLET OPEN TO REMOVE

#3 SLIDE THE AIR FITTING OFF OF THE AIR LINE

#4 AIR LINE IS READY FOR INSTALLATION

INSTALLATION - USING THE NEW AIR LINE FITTING PROVIDED IN THE KIT

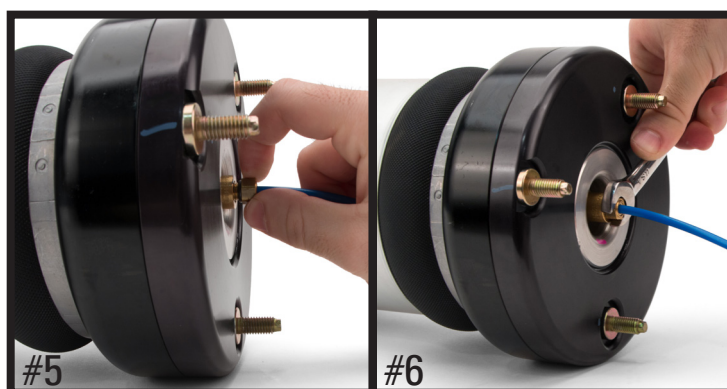


#1 REMOVE AND DISPOSE SHIPPING PIN

#2 INSERT AIR LINE THROUGH FITTING AND COLLET

#3 AIR LINE SHOULD BE APPROX. 3MM BELOW COLLET

#4 PULL AIR FITTING OUTWARD TO LOCK COLLET



#5 INSERT FITTING AND AIRLINE INTO AIR SPRING

#6 TIGHTEN FITTING TO APPROX. 2NM (18 IN-LBS/1.5 FT-LBS)

Arnott® is committed to the quality of its products. If you have a question or problem with any Arnott product, please contact Arnott by calling 800-251-8993 during normal business hours or email techassistance@arnottinc.com. (In the EU please call +31 (0)73 7850 580 or email info@arnotteurope.com)