

Installation Manual

**VB-3489
ARNOTT
VALVE BLOCK
2010-2016 PORSCHE PANAMERA (970)
EXCL. HYBRID**



Congratulations on your purchase of an Arnott® air suspension product. We at Arnott Incorporated are proud to offer a high quality product at the industry's most competitive pricing. Thank you for your confidence in us and our product.

Proper installation is essential to experience and appreciate the benefits of this system. Please take a moment to review these installation instructions before you begin to install these components on your vehicle. The removal and installation of air suspension products should only be performed by a fully qualified, ASE Certified, professional.

It is equally important to be aware of all necessary safety measures while installing your new Air Suspension System. This includes proper lifting and immobilizing of the vehicle and isolation of any stored energy to prevent personal injury or property damage.

"Engineered to Ride, Built to Last®"



WARNING: *The air suspension system is under pressure (up to 10 bar, or 150 lbf/in). Verify pressure has been relieved and disconnect power to the air suspension system prior to disassembly. Do not allow dirt or grease to enter the system. Always wear standard hand, ear, and eye protection when servicing the air suspension system.*

Arnott® is committed to the quality of its products. If you have a question or problem with any Arnott product, please contact Arnott by calling **800-251-8993** during normal business hours or email techassistance@arnottinc.com. (In the EU please call **+31 (0)73 7850 580** or email info@arnotteurope.com)

GENERAL INFORMATION:

Reading this manual signifies your agreement to the terms of the general release, waiver of liability, and hold harmless agreement, the full text of which is available at www.arnottinc.com.

- Not to be stored below 5°F (-15°C) or above 122°F (50°C).
- Avoid damage to air lines and cables.
- Removal and installation is only to be performed by fully qualified personnel.
- Use car manufacturer's diagnostic software.

CAUTION: Damage to the vehicle and air suspension system can be incurred if work is carried out in a manner other than specified in the instructions or in a different sequence.



To avoid the possibility of short circuits while working with electric components consult your owner's manual on how to disconnect your battery.



Consult your vehicle owner's manual, service manual, or car dealer for the correct jacking points on your vehicle and for additional care, safety and maintenance instructions. Under no circumstances should any work be completed underneath the vehicle if it is not adequately supported, as serious injuries and death can occur.

THIS MANUAL ILLUSTRATES THE PROPER INSTALLATION OF VB-3489 ON A 2012 PORSCHE PANAMERA (970) CHASSIS

NOTE:

THIS VEHICLE CONTAINS A "CLOSED AIR SUPPLY SYSTEM". REPLACEMENT OF COMPONENTS REQUIRES PROPER ADHERENCE TO PROCEDURES SET FORTH WITHIN OE SERVICING LITERATURE. FAILURE TO COMPLY WITH THE OE PRESCRIBED PROCEDURES CAN RESULT IN COMPONENT DAMAGE AND/OR FAILURE.

VALVE BLOCK REMOVAL

1. RAISE VEHICLE.
2. EMPTY CLOSED AIR SUPPLY SYSTEM PER MANUFACTURER'S SPECIFICATION.
3. REMOVE REAR UNDERBODY PANEL (FIGURES 1, 2)



FIGURE 1



FIGURE 2

4. PARTIALLY REMOVE HEAT SHIELD TO GAIN ACCESS TO VALVE BLOCK. (FIGURE 3)

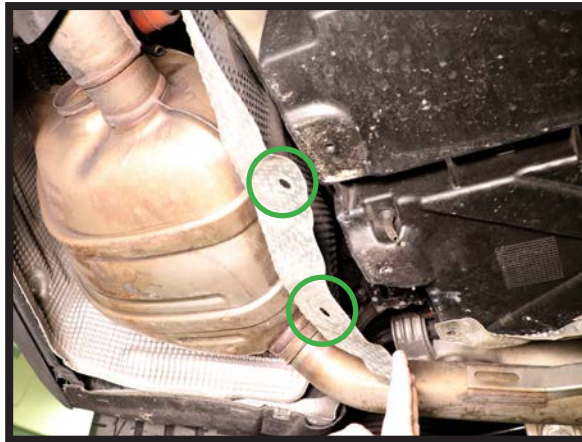


FIGURE 3

5. REMOVE THE AIR LINES FROM VALVE BLOCK. (FIGURES 4, 5)

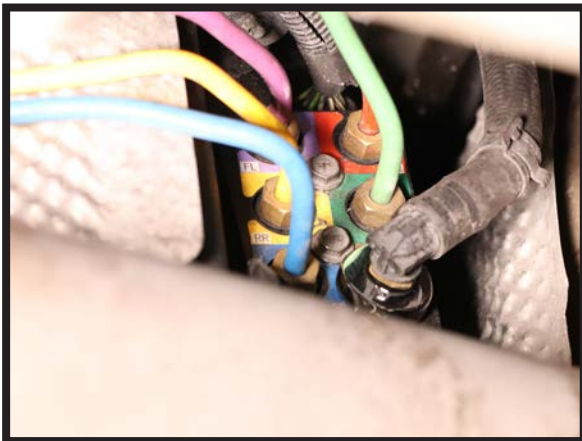


FIGURE 4



FIGURE 5

5. REMOVE THREE (3) VALVE BLOCK BRACKET SCREWS. (FIGURES 6, 7, 8)

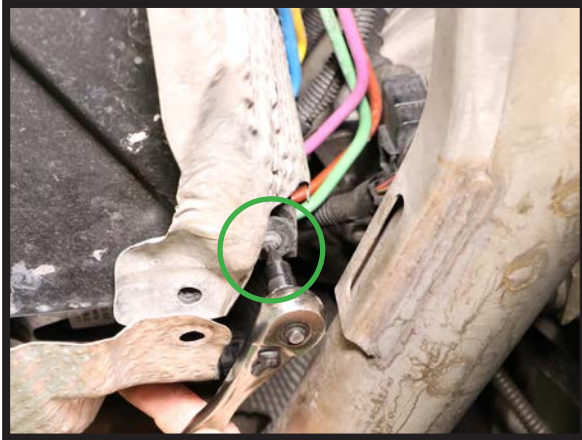


FIGURE 6

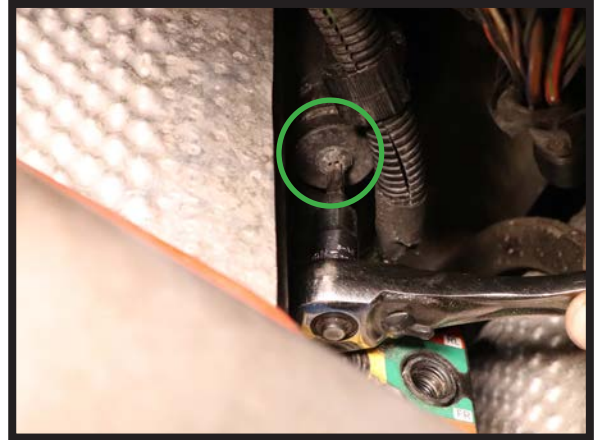


FIGURE 7



FIGURE 8

6. DISCONNECT THE ELECTRICAL CONNECTION FROM THE VALVE BLOCK AND REMOVE THE VALVE BLOCK FROM VEHICLE. (FIGURES 9, 10)



FIGURE 9



FIGURE 10

7. REMOVE THE BRACKET FROM THE SPENT VALVE BLOCK. (FIGURES 11, 12)



FIGURE 11



FIGURE 12

8. REMOVAL COMPLETE.

VALVE BLOCK INSTALLATION



Tighten all nuts and bolts to manufacturer's specifications during the installation process.



Do not remove the air fittings from the valve block. Doing so may cause damage and/or void warranty. Remove the shipping pins from the new air fittings and insert the air lines until fully seated.

1. PLACE THE BRACKET ON THE NEW VALVE BLOCK IN THE SAME ORIENTATION USING THE PROVIDED SCREWS. REMOVE SHIPPING PINS. (FIGURES 13, 14)



FIGURE 13



FIGURE 14

2. CONNECT THE ELECTRICAL CONNECTION. (FIGURE 15)



FIGURE 15

3. INSTALL THE NEW VALVE BLOCK & THREE (3) VALVE BLOCK BRACKET SCREWS. TIGHTEN TO MANUFACTURER'S SPECIFICATIONS. (FIGURES 16, 17, 18)

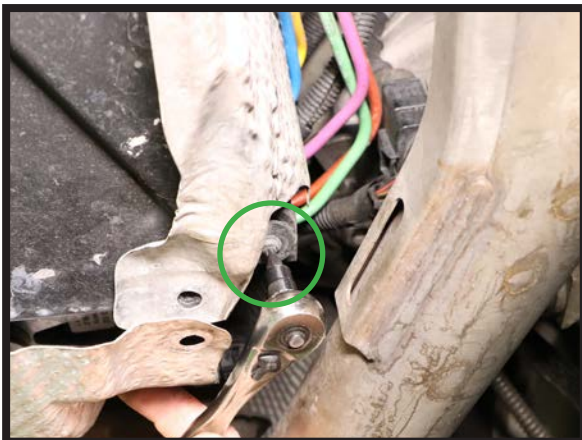


FIGURE 16

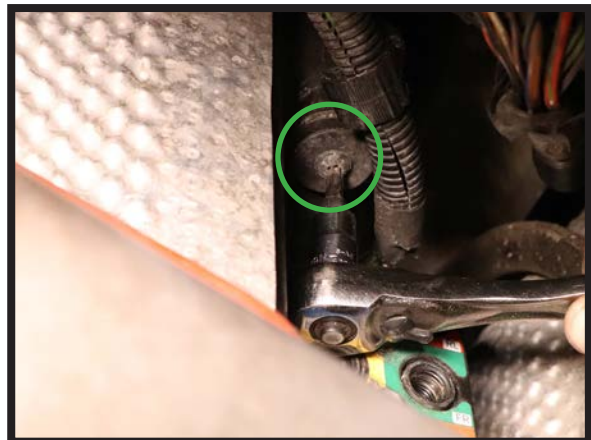


FIGURE 17



FIGURE 18

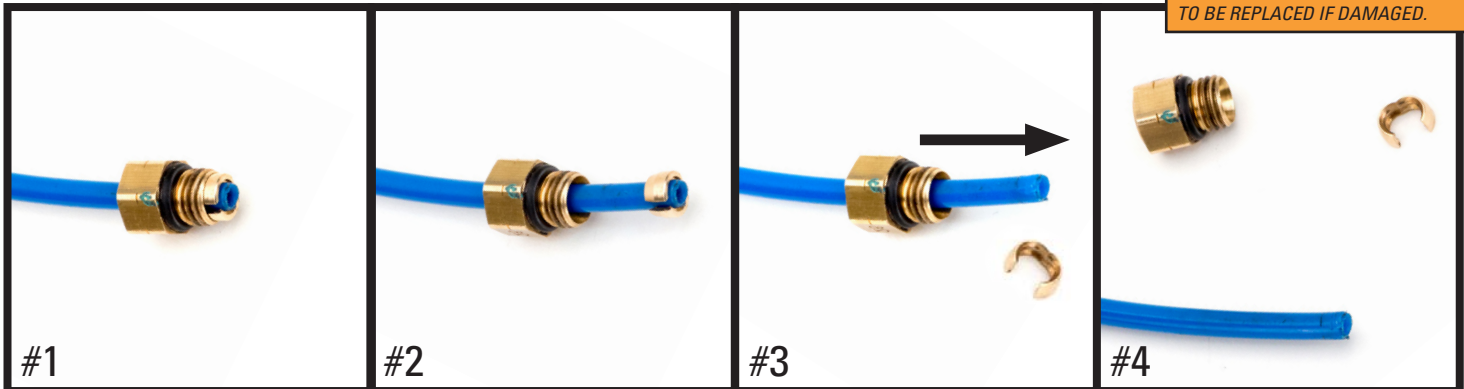
4. PREPARE THE EXISTING AIR LINES BY REMOVING THE OLD AIR FITTINGS, USING THE FIGURE BELOW AS AN EXAMPLE. (FIGURE 19)

REMOVAL



Prior to inserting the existing air line into the new air fitting you will need to remove the old original equipment air line fitting.

NOTE: SCRATCHES AND/OR DEEP CUTS IN THE AIR LINE CAN RESULT IN POSSIBLE LEAKS. INSPECT THE AIR LINE BEFORE INSERTION. AIR LINE NEEDS TO BE REPLACED IF DAMAGED.



#1 ORIGINAL EQUIPMENT AIR LINE FITTING

#2 SLIDE THE THREADED PORTION UP THE LINE AND SPREAD THE COLLET OPEN TO REMOVE

#3 SLIDE THE AIR FITTING OFF OF THE AIR LINE

#4 AIR LINE IS READY FOR INSTALLATION

FIGURE 19

5. INSERT THE AIR LINES INTO THE VALVE BLOCK. PRESS THE LINES IN FIRMLY UNTIL THEY ARE FULLY SEATED. (FIGURE 20)

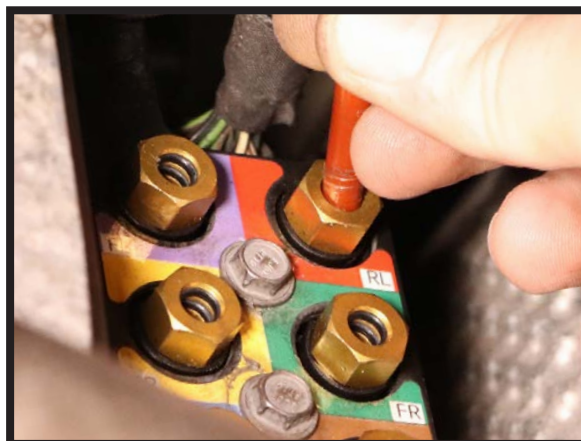


FIGURE 20

6. REINSTALL THE REAR UNDERBODY PANEL. (FIGURE 21)



FIGURE 21

7. CHARGE THE VEHICLE'S "CLOSED AIR SUPPLY SYSTEM" PER MANUFACTURER'S SPECIFICATION.
8. INFLATE THE VEHICLE'S AIR SPRINGS PER MANUFACTURER'S SPECIFICATIONS.
9. INSTALLATION COMPLETE.