

Congratulations on your purchase of an Arnott® air suspension product. We at Arnott Incorporated are proud to offer a high quality product at the industry's most competitive pricing. Thank you for your confidence in us and our product.

Proper installation is essential to experience and appreciate the benefits of this system. Please take a moment to review these installation instructions before you begin to install these components on your vehicle. The removal and installation of air suspension products should only be performed by a fully qualified, ASE Certified, professional.

It is equally important to be aware of all necessary safety measures while installing your new Air Suspension System. This includes proper lifting and immobilizing of the vehicle and isolation of any stored energy to prevent personal injury or property damage.

## "Engineered to Ride, Built to Last®"



**WARNING:** The air suspension system is under pressure (up to 10 bar, or 150 lbf/in). Verify pressure has been relieved and disconnect power to the air suspension system prior to disassembly. Do not allow dirt or grease to enter the system. Always wear standard hand, ear, and eye protection when servicing the air suspension system.

Arnott® is committed to the quality of its products. If you have a question or problem with any Arnott product, please contact Arnott by calling **800-251-8993** during normal business hours or email [techassistance@arnottinc.com](mailto:techassistance@arnottinc.com). (In the EU please call +31 (0)73 7850 580 or email [info@arnotteurope.com](mailto:info@arnotteurope.com)).

## GENERAL INFORMATION:

*Reading this manual signifies your agreement to the terms of the general release, waiver of liability, and hold harmless agreement, the full text of which is available at [www.arnottinc.com](http://www.arnottinc.com).*

- Not to be stored below 5°F (-15°C) or above 122°F (50°C).
- Avoid damage to air lines and cables.
- Removal and installation is only to be performed by fully qualified personnel.
- Use car manufacturer's diagnostic software.

**CAUTION:** *Damage to the vehicle and air suspension system can be incurred if work is carried out in a manner other than specified in the instructions or in a different sequence.*



*To avoid the possibility of short circuits while working with electric components consult your owner's manual on how to disconnect your battery.*



*Consult your vehicle owner's manual, service manual, or car dealer for the correct jacking points on your vehicle and for additional care, safety and maintenance instructions. Under no circumstances should any work be completed underneath the vehicle if it is not adequately supported, as serious injuries and death can occur.*

## THIS MANUAL ILLUSTRATES THE PROPER REMOVAL AND INSTALLATION OF THE RIDE HEIGHT SENSOR RH-3587 ON A 2015 AUDI A8 (D4) CHASSIS

### RIDE HEIGHT SENSOR REMOVAL

1. RAISE THE VEHICLE.
2. REMOVE APPLICABLE FRONT WHEEL. (FIGURE 1)



FIGURE 1

3. DISCONNECT LEVEL CONTROL SENSOR ARM. (FIGURE 2)



FIGURE 2

4. DISCONNECT THE ELECTRICAL CONNECTION. (FIGURES 3, 4)



FIGURE 3



FIGURE 4

5. REMOVE THE BRACKET BOLT AND REMOVE RIDE HEIGHT SENSOR. (FIGURES 5, 6)



FIGURE 5



FIGURE 6

7. REMOVAL COMPLETE.

## RIDE HEIGHT SENSOR INSTALLATION



*Tighten all nuts and bolts to manufacturer's specifications during the installation process.*

1. INSTALL THE NEW RIDE HEIGHT SENSOR INTO THE VEHICLE, POSITIONING IT IN THE SAME ORIENTATION AS THE PREVIOUSLY REMOVED SENSOR. (FIGURE 7)



FIGURE 7

2. RECONNECT THE BRACKET AND SENSOR ARM BOLTS. TIGHTEN TO MANUFACTURER'S SPECIFICATIONS. (FIGURES 8, 9)



FIGURE 8



FIGURE 9

3. RECONNECT ELECTRICAL CONNECTION TO NEW RIDE HEIGHT SENSOR. (FIGURE 10)

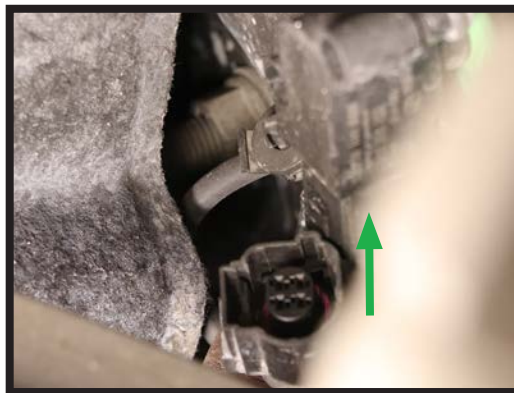


FIGURE 10

4. REINSTALL APPLICABLE FRONT WHEEL.
5. LOWER VEHICLE.
6. PERFORM CONTROL POSITION AND HEADLAMP ADAPTION PER MANUFACTURER'S SPECIFICATION.
7. INSTALLATION COMPLETE.