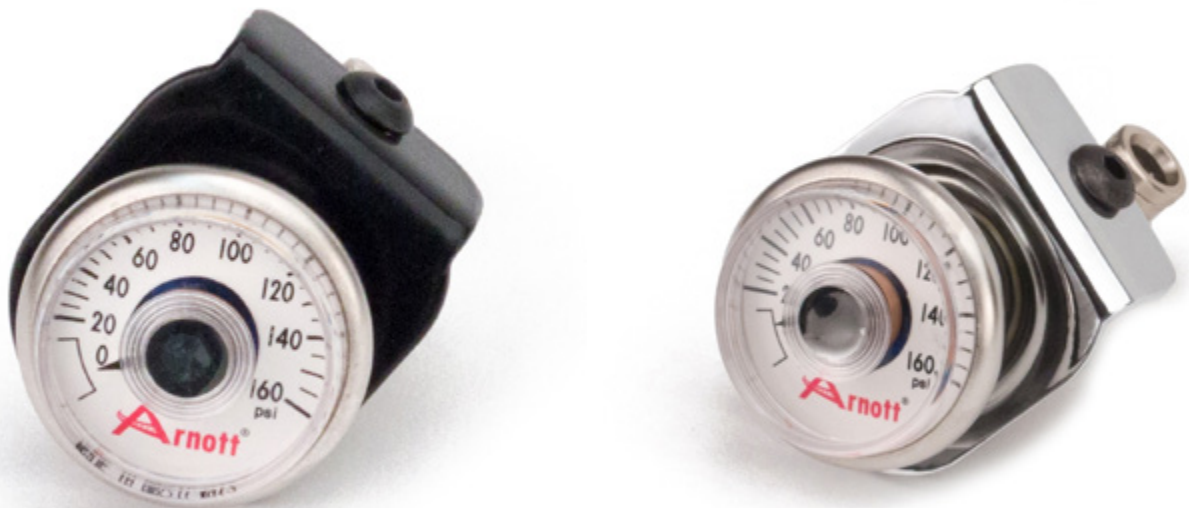


Arnott™

Motorcycle Suspension

INSTALLATION MANUAL

**K-2635 & K-2636
Pressure Gauge
1980-Present Harley-Davidson® Touring Models**



ELEVATE YOUR RIDE.®

1. The gauge comes as a complete assembly from the factory. Pressure gauge, bracket and air line fitting are all pre-assembled for your convenience. (Figure 1)



FIGURE 1

2. Use the existing 1/4" hole in the underside of the frame, in front of the battery box, to mount the pressure gauge. (Figure 2)



FIGURE 2

3. Use the 1/4" air line supplied in the kit and simply push it into the "push to connect" fitting that's already installed as part of the pressure gauge assembly. (Figure 3)

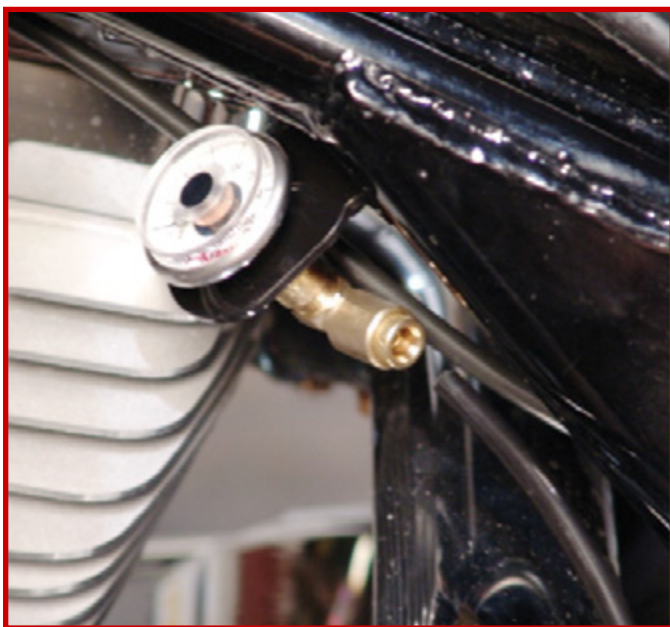


FIGURE 3

4. Route the 1/4" line from the gauge, rearward through the large hole in the frame and connect to the distribution manifold. You will need to remove the plug and insert the fitting supplied in the kit. Cut the 1/4" air line to length and connect. (Figure 4)

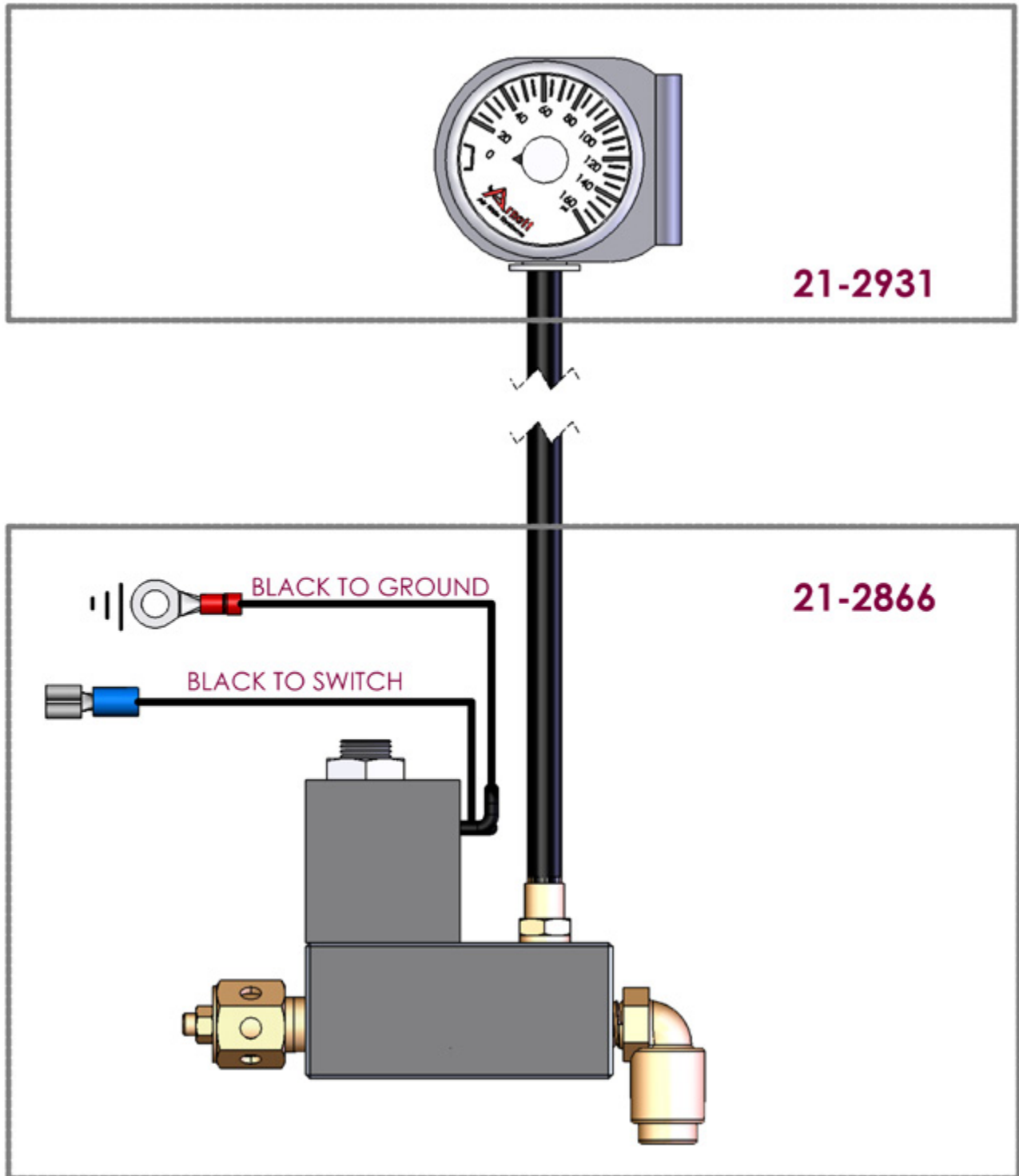


FIGURE 4

SCHEMATIC ON NEXT PAGE

COMPONENTS

PART NO.	DESCRIPTION	QTY
21-2931	GAUGE/BRACKET ASSEMBLY	1
29-2627	1/4" LINE	3 FT
29-2633	PUSH TO CONNECT FITTING	1



Arnott™

Motorcycle Suspension

Arnott US Business Office:

www.arnottinc.com

100 Sea Ray Drive
Merritt Island, FL 32953

Call: 800.251.8993

321.868.3016

Fax: 321.868.3703

Email: techassistance@arnottinc.com

Arnott Europe Business Office:

www.arnotteurope.com

Docterskampstraat 1E/1F, 3
5222 AM 's-Hertogenbosch (NL)

NL Phone: +31 73 7850 580

DE Phone: +31 85 2087 438

UK Phone: +44 203 3186 124

BE Phone: +32 258 846 90

ES Phone: +34 91 901 10 56

FR Phone: +32 78 48 46 93

Email: info@arnotteurope.com



**Exceptional
Ride Comfort**



**Easy
Installation**



**Designed for
Motorcycles**



**TruAIR®
Technology**



**Rest
Flat-Footed**



**Reduced
Painful
Bottoming**



**Rigorously
Tested**



**Prevent
Dangerous
Tire Wear**



**Prevent Extra
Drivetrain
Stress**



**Global,
Multilingual
Tech Support**