

Installation Manual

C-2527 ARNOTT COIL SPRING CONVERSION KIT FOR 2000-2006 GM FULL SIZE SUVs



Congratulations on your purchase of an Arnott® air suspension product. We at Arnott Incorporated are proud to offer a high quality product at the industry's most competitive pricing. Thank you for your confidence in us and our product.

Proper installation is essential to experience and appreciate the benefits of this system. Please take a moment to review these installation instructions before you begin to install these components on your vehicle. The removal and installation of air suspension products should only be performed by a fully qualified, ASE Certified, professional.

It is equally important to be aware of all necessary safety measures while installing your new Air Suspension System. This includes proper lifting and immobilizing of the vehicle and isolation of any stored energy to prevent personal injury or property damage.

"Engineered to Ride, Built to Last®"



WARNING: The air suspension system is under pressure (up to 10 bar, or 150 lbf/in). Verify pressure has been relieved and disconnect power to the air suspension system prior to disassembly. Do not allow dirt or grease to enter the system. Always wear standard hand, ear, and eye protection when servicing the air suspension system.

KIT CONTAINS:

PARTS LIST

P/N	QTY	DESCRIPTION
21-7928	1	ARNOTT FRONT COIL SPRING CONVERSION
21-7932	1	ARNOTT REAR COIL SPRING CONVERSION
21-7927	1	INSTRUCTION PACKET

Arnott® is committed to the quality of its products. If you have a question or problem with any Arnott product, please contact Arnott by calling **800-251-8993** during normal business hours or email techassistance@arnottinc.com.

GENERAL INFORMATION:

Reading this manual signifies your agreement to the terms of the general release, waiver of liability, and hold harmless agreement, the full text of which is available at www.arnottinc.com.

- Not to be stored below 5°F (-15°C) or above 122°F (50°C).
- Avoid damage to air lines and cables.
- Removal and installation is only to be performed by fully qualified personnel.
- Use car manufacturer's diagnostic software.

CAUTION: *Damage to the vehicle and air suspension system can be incurred if work is carried out in a manner other than specified in the instructions or in a different sequence.*



To avoid the possibility of short circuits while working with electric components consult your owner's manual on how to disconnect your battery.



Consult your vehicle owner's manual, service manual, or car dealer for the correct jacking points on your vehicle and for additional care, safety and maintenance instructions. Under no circumstances should any work be completed underneath the vehicle if it is not adequately supported, as serious injuries and death can occur.

FRONT SHOCK REMOVAL

1. SET STEERING TO STRAIGHT.
2. RAISE VEHICLE.
3. REMOVE THE FRONT WHEELS. (FIGURE 10-1)



FIGURE 10-1

4. LOCATE AND REMOVE THE UPPER SHOCK SENSOR PLUGS. TURN THE PLUGS COUNTER CLOCKWISE TO UNLOCK THEM FROM THE SHOCKS. (FIGURE 10-2, 10-3)

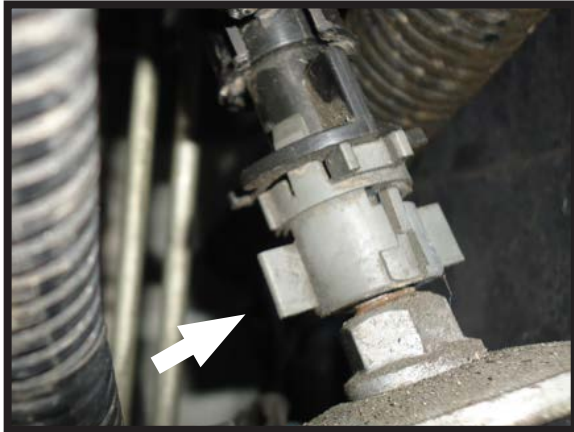


FIGURE 10-2



FIGURE 10-3

5. SUPPORT THE LOWER A-ARMS WITH A JACK OR OTHER SUITABLE DEVICE TO RELIEVE PRESSURE FROM THE SHOCKS' MOUNTING POINTS. (FIGURE 10-4)



FIGURE 10-4

6. REMOVE THE UPPER MOUNTING NUTS, WASHERS, AND RUBBER ISOLATORS. (FIGURE 10-5, 10-6)

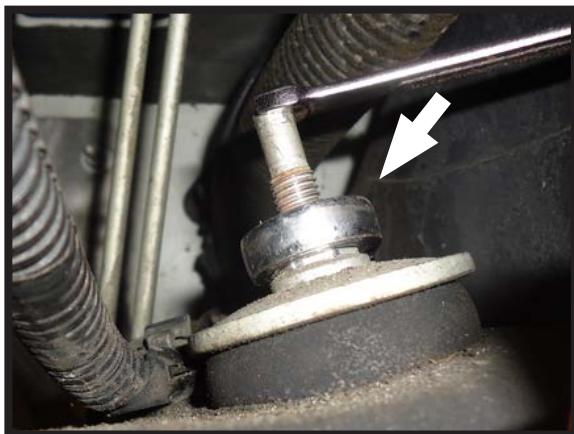


FIGURE 10-5



FIGURE 10-6

7. REMOVE THE LOWER SHOCK MOUNTING NUTS AND BOLTS. (FIGURE 10-7, 10-8)



FIGURE 10-7



FIGURE 10-8

8. REMOVE THE SHOCKS FROM THE VEHICLE. (FIGURE 10-9)



FIGURE 10-9

FRONT SHOCK INSTALLATION



Tighten all nuts and bolts to manufacturer's specifications during the installation process.

1. INSTALL THE SHOCKS IN REVERSE ORDER OF REMOVAL USING THE SHOCK SENSORS SUPPLIED. SECURE THE SENSORS TO THE TOP OF THE SHOCKS AND RECONNECT THE SHOCK SENSOR PLUGS. (FIGURE 20-1)



FIGURE 20-1

REAR AIR SHOCK/COIL SPRING REMOVAL

1. SET STEERING TO STRAIGHT.
2. RAISE VEHICLE.
3. REMOVE THE REAR WHEELS. (FIGURE 20-1)



FIGURE 20-1

4. LOCATE AND REMOVE THE AIR LINES TO DEFLATE THE AIR SHOCKS. TURN THE METAL CLIP APPROX. 90° TO REMOVE THE AIR LINE FITTING FROM THE AIR SHOCKS. (FIGURE 20-2)

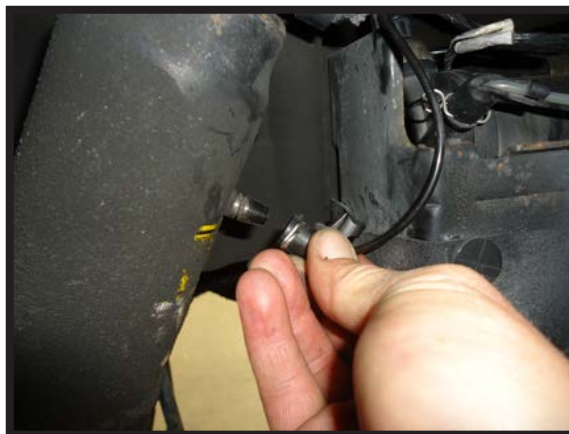


FIGURE 20-2

5. LOCATE AND REMOVE THE ELECTRICAL CONNECTORS FROM THE TOP OF THE AIR SHOCKS. (FIGURE 20-3)



FIGURE 20-3

6. LOOSEN AND REMOVE THE UPPER AND LOWER SHOCK MOUNTING NUTS. (FIGURE 20-4, 20-5)



FIGURE 20-4

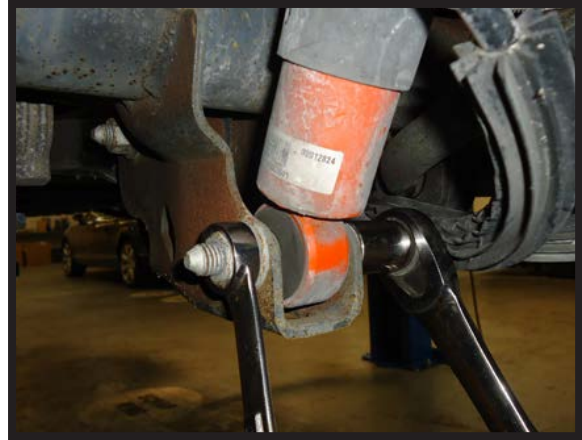


FIGURE 20-5

7. SUPPORT THE AXLE TO RELIEVE PRESSURE FROM THE AIR SHOCKS MOUNTING POINTS. REMOVE THE UPPER AND LOWER AIR SHOCK MOUNTING BOLTS. (FIGURE 20-6)



FIGURE 20-6

8. REMOVE THE AIR SHOCKS FROM THE VEHICLE. (FIGURE 20-7)



FIGURE 20-7

9. REMOVE THE BOLTS AND RIDE HEIGHT SENSORS FROM THE UPPER CONTROL ARMS. (FIGURE 20-8, 20-9)

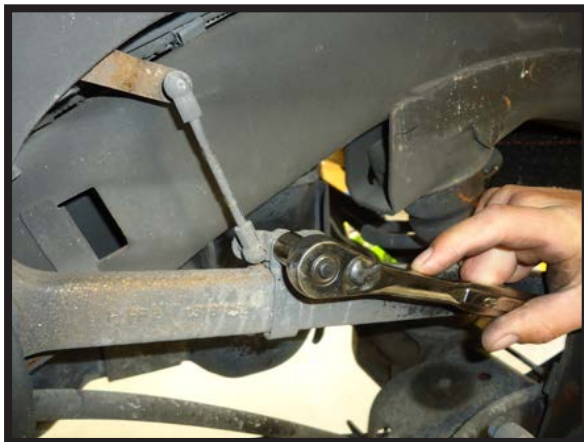


FIGURE 20-8



FIGURE 20-9

10. REMOVE THE BOLT AND BRACKET HOLDING THE BRAKE LINE TO THE REAR DIFFERENTIAL. (FIGURE 20-10, 20-11)



FIGURE 20-10



FIGURE 20-11

11. REMOVE THE NUTS ON THE UPPER SWAY BAR END LINKS. (FIGURE 20-12)



FIGURE 20-12

12. USING A JACK OR OTHER SUITABLE DEVICE, SUPPORT THE AXLE TO RELEASE PRESSURE FROM THE SWAY BAR END LINKS. REMOVE THE SWAY BAR END LINK BOLTS. (FIGURE 20-13, 20-14)



FIGURE 20-13



FIGURE 20-14

13. SLOWLY LOWER THE AXLE AND REMOVE THE COIL SPRINGS. (FIGURE 20-15)



FIGURE 20-14

REAR COIL SPRING INSTALLATION



Tighten all nuts and bolts to manufacturer's specifications during the installation process.

1. INSTALLATION IS IN REVERSE ORDER OF COIL SPRING REMOVAL.

ELECTRONIC BYPASS MODULE INSTALLATION

1. LOCATE THE VEHICLE'S AIR SUSPENSION CONTROL MODULE IN THE REAR RIGHT HAND CORNER OF THE CARGO AREA.
2. REMOVE (3) CONNECTORS FROM AIR RIDE CONTROLLER. (FIGURE 30-1)

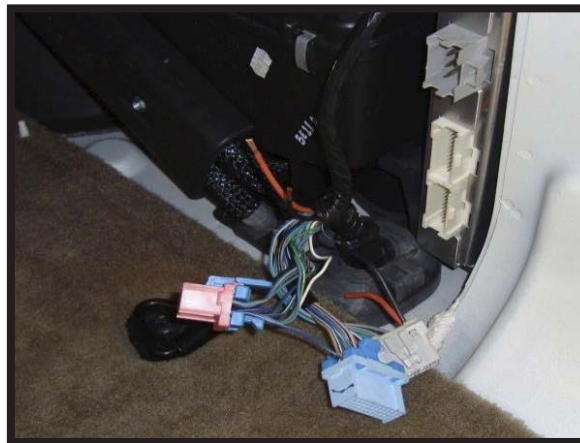


FIGURE 30-1

3. CUT ORANGE AND BLACK WIRES (PINS "D" AND "E"), FROM GREY CONNECTOR. (FIGURE 30-2)

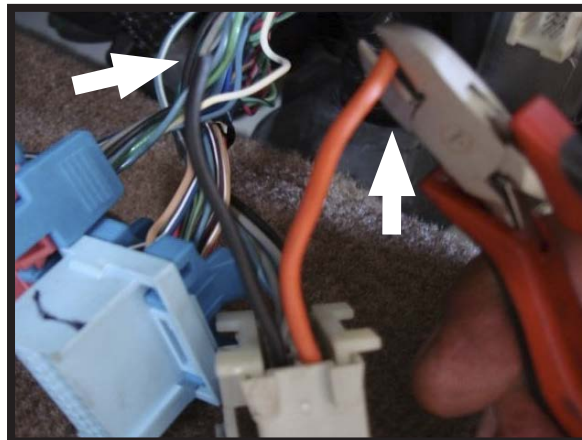


FIGURE 30-2

4. LOCATE PIN B-8 ON PINK 24 PIN CONNECTOR AND CUT WIRE. (FIGURE 30-3)

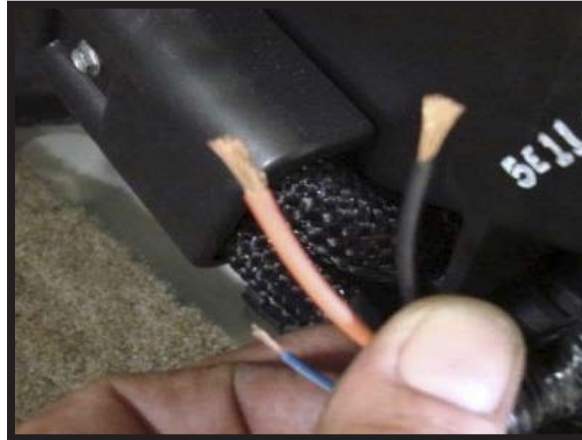


FIGURE 30-3

5. CONNECT TO THE WIRING HARNESS SIDE. (FIGURE 30-4, 30-5)

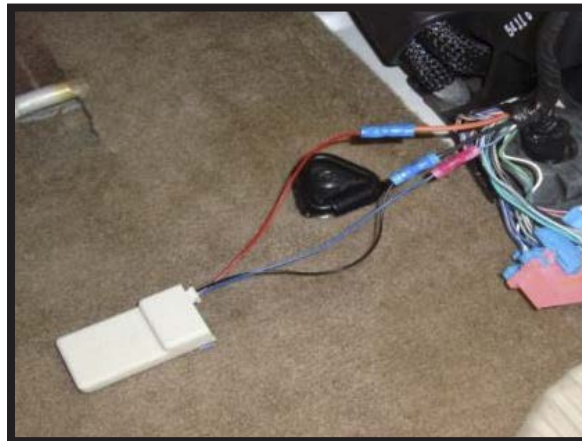


FIGURE 30-4

ELECTRONIC BYPASS MODULE	FROM	TO	PIN#	VEHICLE'S WIRING HARNESS
	RED	BROWN W/ WHITE STRIPE	1	
	BLACK	BLACK	3	
	BLUE	YELLOW	7	
	GREEN	GREEN	8	

FIGURE 30-5

6. DO NOT RECONNECT AIR RIDE CONTROLLER!
7. REPLACE FACTORY 25 A FUSE WITH SUPPLIED 5 A FUSE.