

# Installation Manual

AS-3577  
ARNOTT  
REMANUFACTURED FRONT RIGHT AIR STRUT  
2017-2019 MERCEDES E43 (W213)  
w/4MATIC



Congratulations on your purchase of an Arnott® air suspension product. We at Arnott Incorporated are proud to offer a high quality product at the industry's most competitive pricing. Thank you for your confidence in us and our product.

Proper installation is essential to experience and appreciate the benefits of this system. Please take a moment to review these installation instructions before you begin to install these components on your vehicle. The removal and installation of air suspension products should only be performed by a fully qualified, ASE Certified, professional.

It is equally important to be aware of all necessary safety measures while installing your new Air Suspension System. This includes proper lifting and immobilizing of the vehicle and isolation of any stored energy to prevent personal injury or property damage.

**"Engineered to Ride, Built to Last™"**



**WARNING:** *The air suspension system is under pressure (up to 10 bar, or 150 lbf/in). Verify pressure has been relieved and disconnect power to the air suspension system prior to disassembly. Do not allow dirt or grease to enter the system. Always wear standard hand, ear, and eye protection when servicing the air suspension system.*

Arnott® is committed to the quality of its products. If you have a question or problem with any Arnott product, please contact Arnott by calling **800-251-8993** during normal business hours or email [techassistance@arnottinc.com](mailto:techassistance@arnottinc.com). (In the EU please call +31 (0)73 7850 580 or email [info@arnotteurope.com](mailto:info@arnotteurope.com))

## GENERAL INFORMATION:

*Reading this manual signifies your agreement to the terms of the general release, waiver of liability, and hold harmless agreement, the full text of which is available at [www.arnottinc.com](http://www.arnottinc.com).*

- Not to be stored below 5°F (-15°C) and above 122°F (50°C).
- Avoid damage to air lines and cables.
- Removal and installation is only to be performed by fully qualified personnel.
- Use car manufacturer's diagnostic software.

**CAUTION:** *Damage to the vehicle and air suspension system can be incurred if work is carried out in a manner other than specified in the instructions or in a different sequence.*



*To avoid the possibility of short circuits while working with electric components consult your owner's manual on how to disconnect your battery.*



*Consult your vehicle owner's manual, service manual, or car dealer for the correct jacking points on your vehicle and for additional care, safety and maintenance instructions. Under no circumstances should any work be completed underneath the vehicle if it is not adequately supported, as serious injuries and death can occur.*

## AIR STRUT REMOVAL

1. SET STEERING TO STRAIGHT AHEAD.
2. RAISE VEHICLE.
3. REMOVE THE APPLICABLE FRONT WHEEL. (FIGURE 1)



FIGURE 1

4. OPEN THE HOOD AND REMOVE ANY APPLICABLE TRIM COVERING THE STRUT'S TOP MOUNT. (FIGURE 2)



FIGURE 2

5. DISCONNECT THE AIR LINE FROM THE STRUT. (FIGURES 3, 4)

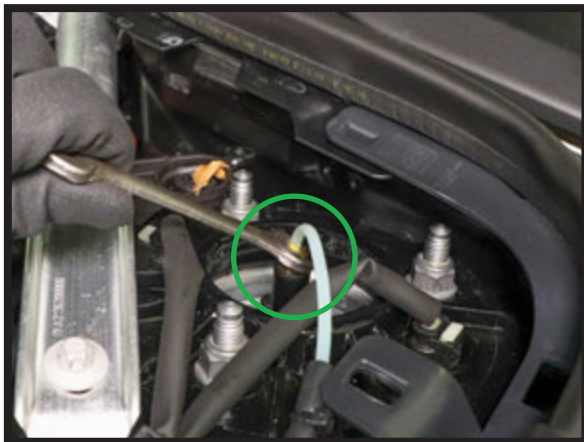


FIGURE 3



FIGURE 4

6. REMOVE THE THREE (3) TOP MOUNT NUTS. (FIGURE 5)

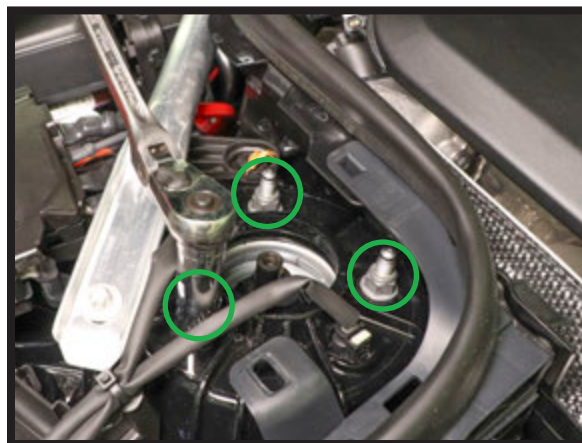


FIGURE 5

7. DISCONNECT THE TWO (2) TOP MOUNT ELECTRICAL CONNECTIONS. (FIGURES 6, 7)



FIGURE 6



FIGURE 7

8. DISCONNECT THE RIDE HEIGHT SENSOR ELECTRICAL CONNECTION. (FIGURE 8)



FIGURE 8

9. DISCONNECT THE SWAY ARM LINKAGE. (FIGURES 9, 10)

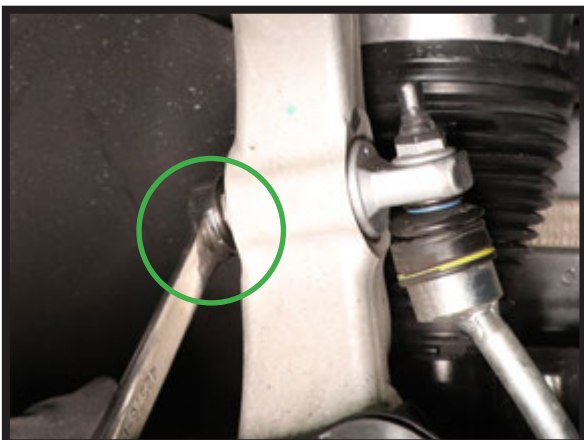


FIGURE 9

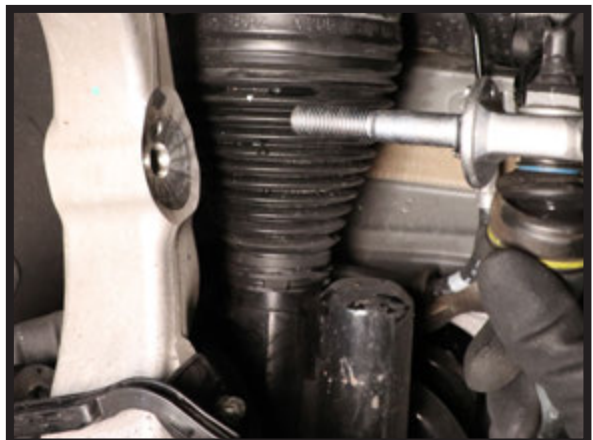


FIGURE 10

10. UNCLIP AND UNROUTE ALL BRAKE/AIR LINES SURROUNDING THE STRUT FOR REMOVAL. (FIGURES 11, 12)

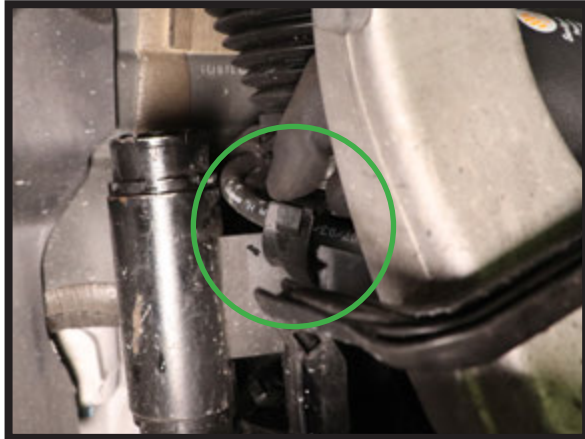


FIGURE 11

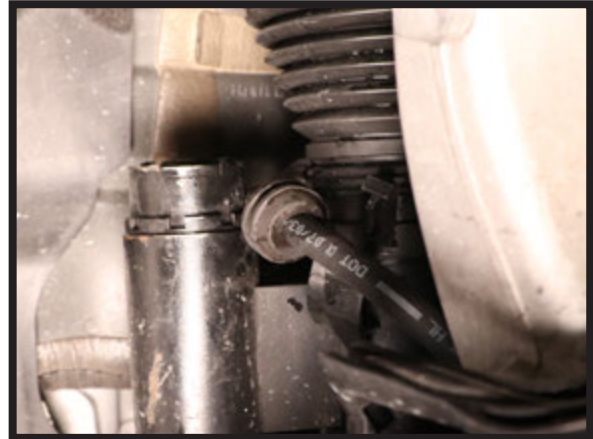


FIGURE 12

11. DISCONNECT COIL WIRES FROM LOWER SHOCK. (FIGURES 13, 14)

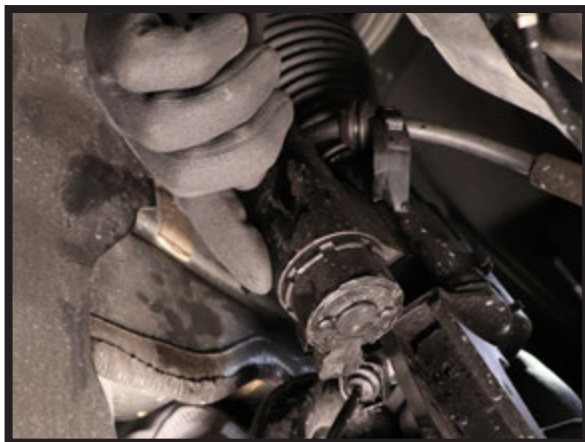


FIGURE 13

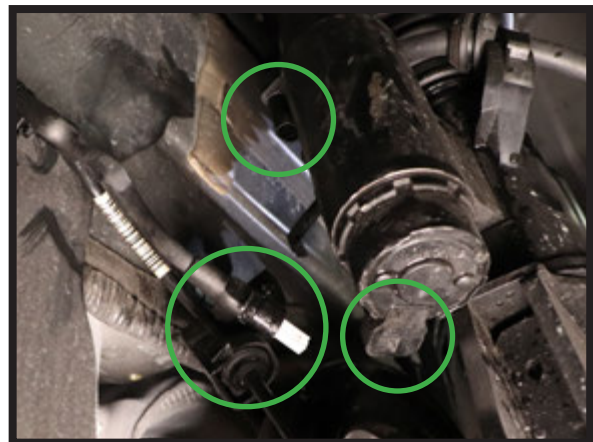


FIGURE 14

12. LOOSEN AND REMOVE THE BOTTOM MOUNT BOLT FROM THE STRUT. (FIGURES 15, 16)



FIGURE 15

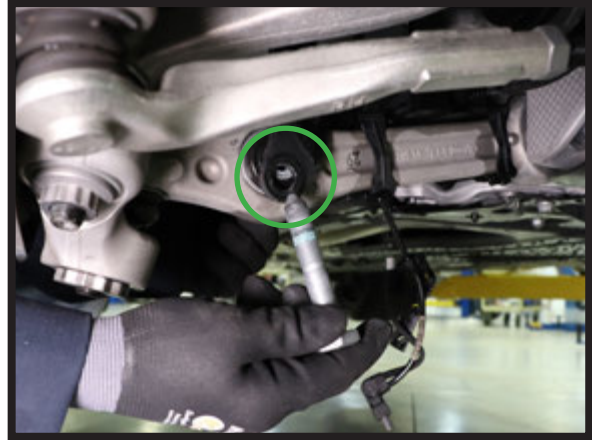


FIGURE 16

13. CAREFULLY REMOVE THE STRUT ASSEMBLY. (FIGURE 17)

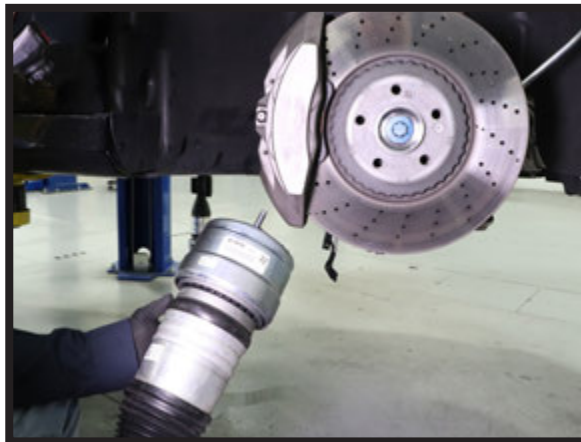


FIGURE 17

14. SAVE AND REUSE THE WIRE RETAINER BELOW. (FIGURE 18) USE THE TWO (2) ARNOTT PROVIDED ZIP TIES TO REATTACH RETAINER ON NEW STRUT DURING INSTALLATION.



FIGURE 18

15. REMOVAL COMPLETE.

## AIR STRUT INSTALLATION



*Tighten all nuts and bolts to manufacturer's specifications during the installation process.*

1. REMOVE SHIPPING PLUG FROM CHECK VALVE AND DISPOSE. INSTALL ARNOTT PROVIDED AIR FITTING AND TIGHTEN SNUGLY. REMOVE THE SHIPPING PIN FROM THE AIR FITTING AND DISPOSE. USE THE FIGURES BELOW AS AN EXAMPLE. (FIGURES 19, 20, 21, 22)

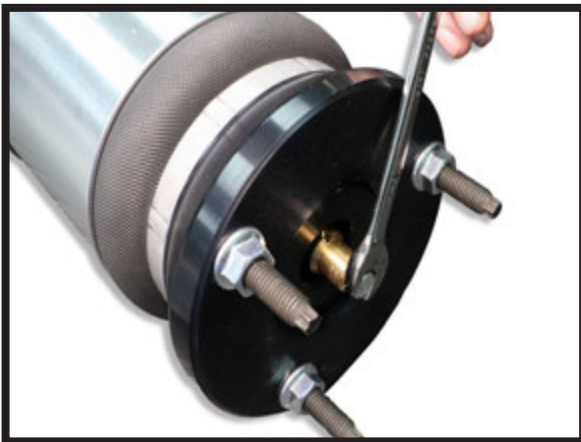


FIGURE 19



FIGURE 20

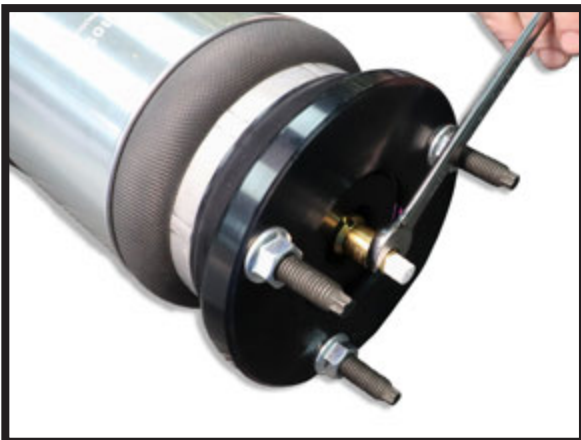


FIGURE 21

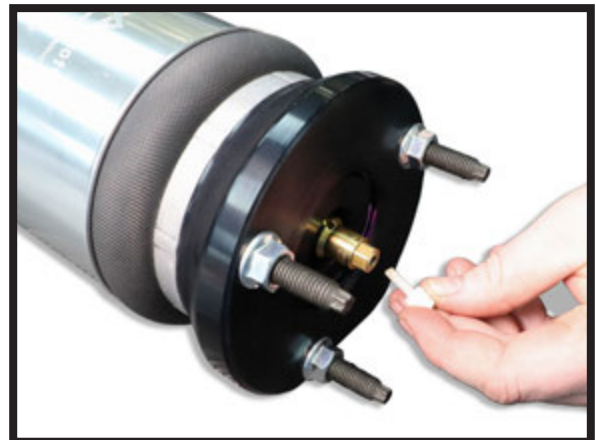


FIGURE 22

2. INSTALL THE ARNOTT STRUT INTO THE VEHICLE. (FIGURE 23)



FIGURE 23

3. REINSTALL THE BOTTOM MOUNT BOLT AND NUT. TIGHTEN TO MANUFACTURER'S SPECIFICATIONS. (FIGURE 24, 25)



FIGURE 24



FIGURE 25

4. CONNECT THE COIL WIRES TO LOWER SHOCK. (FIGURES 26, 27)



FIGURE 26

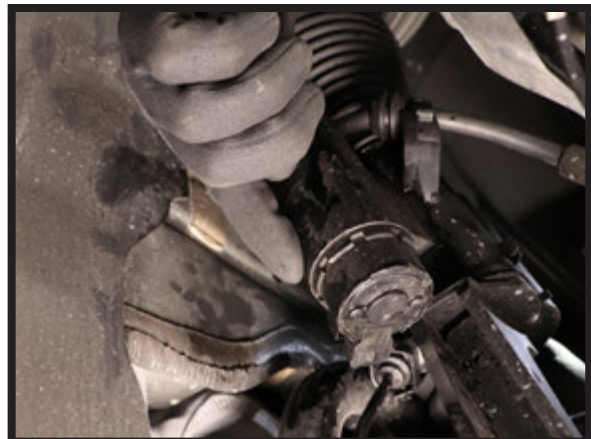


FIGURE 27



5. REROUTE AND CLIP ALL BRAKE/AIR LINES BACK INTO PLACE ON THE WIRE RETAINER. (FIGURES 28, 29)



FIGURE 28



FIGURE 29

6. RECONNECT THE SWAY ARM LINKAGE. (FIGURES 30, 31)

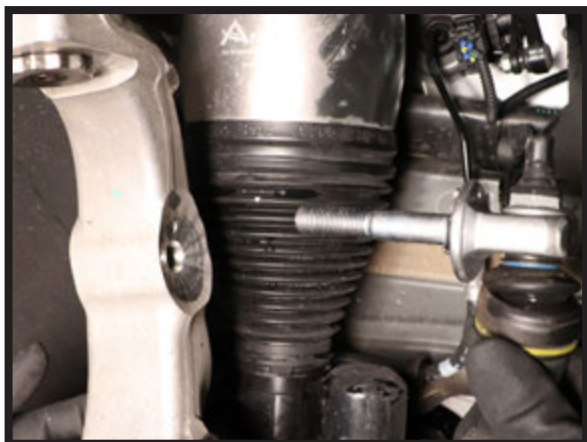


FIGURE 30

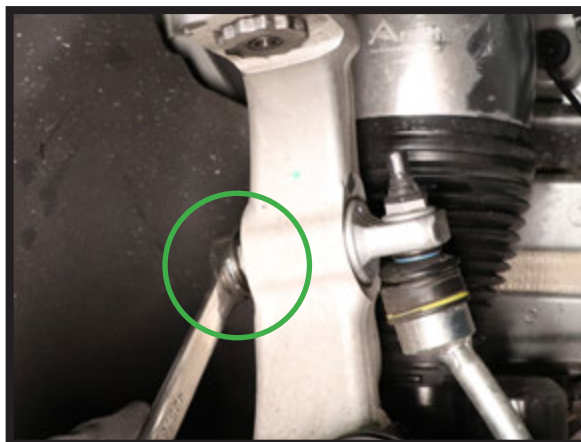


FIGURE 31

7. RECONNECT THE RIDE HEIGHT SENSOR ELECTRICAL CONNECTION. (FIGURE 32)



FIGURE 32

8. RECONNECT THE TWO (2) TOP MOUNT ELECTRICAL CONNECTIONS. (FIGURES 33, 34)

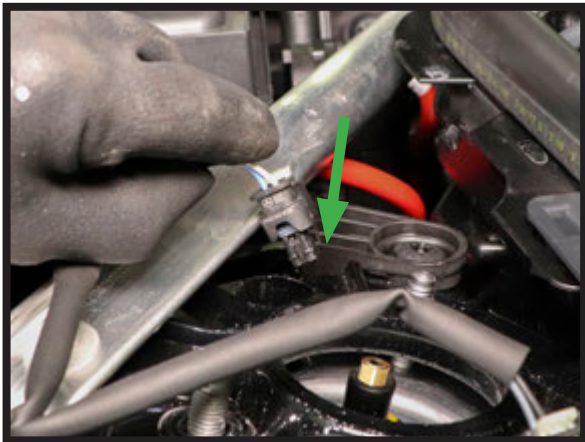


FIGURE 33

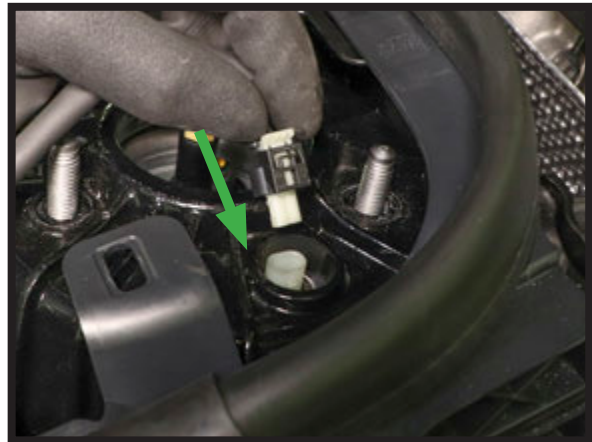


FIGURE 34

9. REINSTALL THE THREE (3) TOP MOUNT NUTS AND TIGHTEN TO MANUFACTURER'S SPECIFICATIONS. (FIGURE 35)



FIGURE 35

10. REINSTALL THE AIR LINE. PUSH THE AIR LINE INTO THE NEW AIR FITTING UNTIL IT IS SEATED COMPLETELY. PULL GENTLY ON THE AIR LINE TO ENSURE IT IS FULLY SEATED IN THE AIR FITTING. (FIGURE 36)

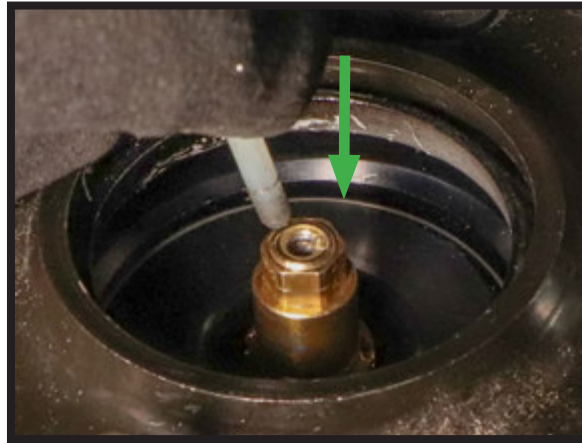


FIGURE 36

11. REINSTALL ANY APPLICABLE TRIM OR PANELS UNDER THE HOOD. CLOSE THE HOOD.
12. REINSTALL THE WHEEL.
13. INSTALLATION COMPLETE.