

Congratulations on your purchase of an Arnott® air suspension product. We at Arnott Incorporated are proud to offer a high quality product at the industry's most competitive pricing. Thank you for your confidence in us and our product.

Proper installation is essential to experience and appreciate the benefits of this system. Please take a moment to review these installation instructions before you begin to install these components on your vehicle. The removal and installation of air suspension products should only be performed by a fully qualified, ASE Certified, professional.

It is equally important to be aware of all necessary safety measures while installing your new Air Suspension System. This includes proper lifting and immobilizing of the vehicle and isolation of any stored energy to prevent personal injury or property damage.

"Engineered to Ride, Built to Last®"



WARNING: *The air suspension system is under pressure (up to 10 bar, or 150 lbf/in). Verify pressure has been relieved and disconnect power to the air suspension system prior to disassembly. Do not allow dirt or grease to enter the system. Always wear standard hand, ear, and eye protection when servicing the air suspension system.*

Arnott® is committed to the quality of its products. If you have a question or problem with any Arnott product, please contact Arnott by calling 800-251-8993 during normal business hours or email techassistance@arnottinc.com. (In the EU please call +31 (0)73 7850 580 or email info@arnotteurope.com)

GENERAL INFORMATION:

Reading this manual signifies your agreement to the terms of the general release, waiver of liability, and hold harmless agreement, the full text of which is available at www.arnottinc.com.

- Not to be stored below 5°F (-15°C) or above 122°F (50°C).
- Avoid damage to air lines and cables.
- Removal and installation is only to be performed by fully qualified personnel.
- Use car manufacturer's diagnostic software.

CAUTION: Damage to the vehicle and air suspension system can be incurred if work is carried out in a manner other than specified in the instructions or in a different sequence.



To avoid the possibility of short circuits while working with electric components consult your owner's manual on how to disconnect your battery.



Consult your vehicle owner's manual, service manual, or car dealer for the correct jacking points on your vehicle and for additional care, safety and maintenance instructions. Under no circumstances should any work be completed underneath the vehicle if it is not adequately supported, as serious injuries and death can occur.



This vehicle contains a "Closed Air Supply System". Replacement of components requires proper adherence to procedures set forth within OE servicing literature. Failure to comply with the OE prescribed procedures can result in component damage and/or failure.

AIR STRUT REMOVAL

1. SET STEERING TO STRAIGHT AHEAD.
2. RAISE VEHICLE.
3. REMOVE APPLICABLE REAR WHEEL AND WHEEL WELL LINER. (FIGURES 1, 2)



FIGURE 1



FIGURE 2

4. REMOVE THE REAR SPEAKER COVER. (FIGURES 3, 4)



FIGURE 3



FIGURE 4

5. REMOVE REAR SPEAKER AND UNHOOK. (FIGURES 5,6)



FIGURE 5



FIGURE 6

6. REMOVE FOAM UNDERNEATH SPEAKER TO ACCESS TOP MOUNT NUTS. (FIGURE 7)

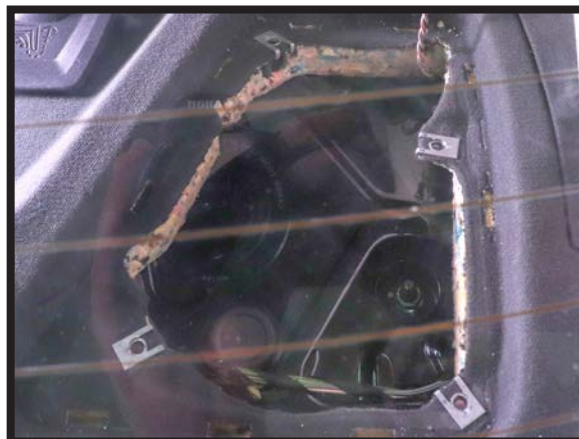


FIGURE 7

7. LOOSEN AND REMOVE THE THREE (3) TOP MOUNTING NUTS FROM THE STRUT. (FIGURE 8)



FIGURE 8

8. DISCONNECT THE STRUT'S ELECTRICAL CONNECTION. (FIGURES 9, 10, 11)

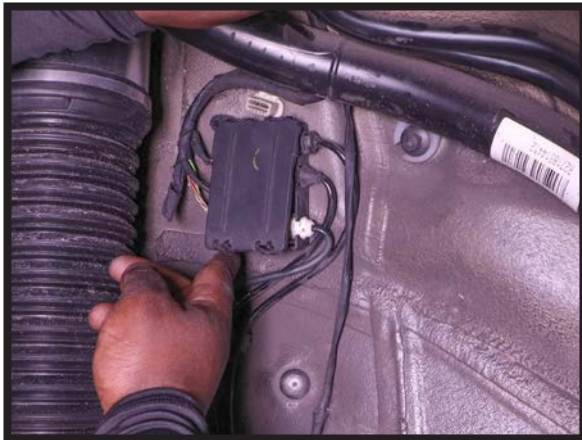


FIGURE 9

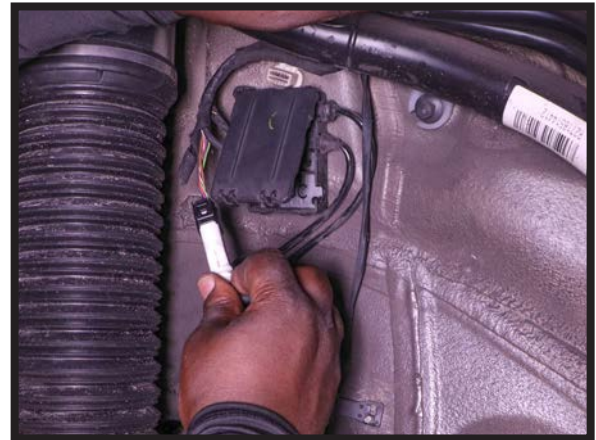


FIGURE 10

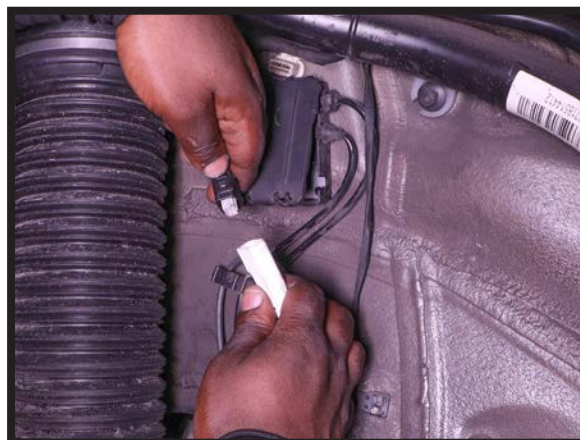


FIGURE 11

9. REMOVE THE AIR LINE AND CHECK VALVE FROM OE STRUT TO RELEASE AIR PRESSURE. (FIGURES 12, 13, 14)



FIGURE 12




FIGURE 13

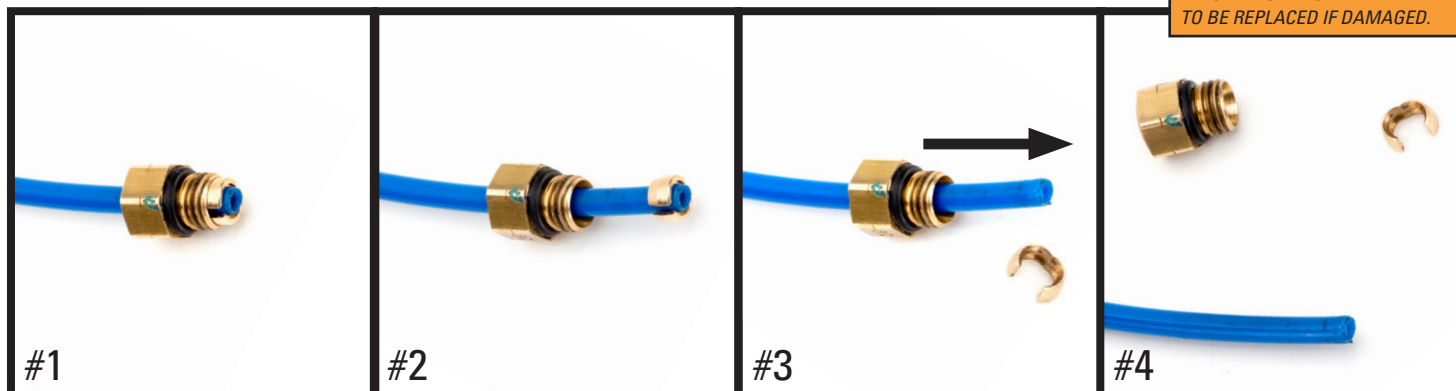


FIGURE 14

10. REMOVE OE AIR LINE FITTING FROM THE AIR LINE AND DISCARD. (FIGURE 15)

REMOVAL  Prior to inserting the existing air line into the new air strut you will need to remove the old original equipment air line fitting and discard.

NOTE: SCRATCHES AND/OR DEEP CUTS IN THE AIR LINE CAN RESULT IN POSSIBLE LEAKS. INSPECT THE AIR LINE BEFORE INSERTION. AIR LINE NEEDS TO BE REPLACED IF DAMAGED.



#1 OE AIR LINE FITTING

#2 SLIDE THE THREADED PORTION UP THE LINE AND SPREAD THE COLLET OPEN TO REMOVE

#3 SLIDE THE AIR FITTING OFF OF THE AIR LINE

#4 DISCARD OE AIR LINE FITTING

FIGURE 15

11. REMOVE HOUSING BOLTS AND PUSH HOUSING ASIDE FOR EASIER STRUT REMOVAL. (FIGURES 16, 17)



FIGURE 16



FIGURE 17

12. LOOSEN AND REMOVE THE BOTTOM MOUNT BOLT. (FIGURES 18, 19)



FIGURE 18



FIGURE 19

13. REMOVE THE SHOCK FROM THE VEHICLE. (FIGURE 20)



FIGURE 20

14. REMOVAL COMPLETE.

AIR STRUT INSTALLATION



Tighten all nuts and bolts to manufacturer's specifications during the installation process.

1. INSTALL THE NEW AIR STRUT INTO THE VEHICLE. (FIGURE 21)

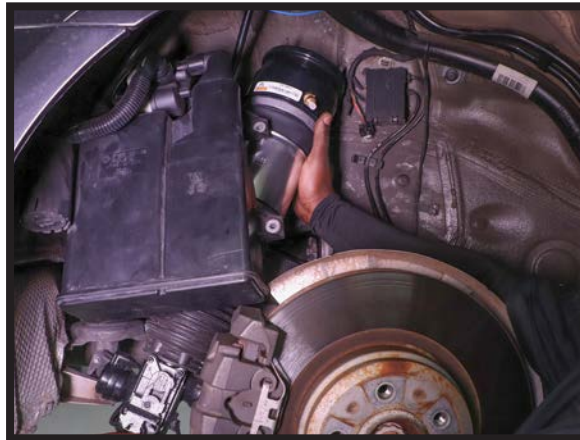


FIGURE 21

2. REINSTALL THE BOTTOM MOUNT BOLT AND TIGHTEN TO MANUFACTURER'S SPECIFICATIONS. (FIGURES 22, 23)



FIGURE 22



FIGURE 23

3. REINSTALL THE HOUSING. TIGHTEN BOLTS TO MANUFACTURER'S SPECIFICATIONS. (FIGURE 24)



FIGURE 24

4. REMOVE THE WHITE SHIPPING PIN FROM THE AIR FITTING. (FIGURE 25)



FIGURE 25

5. INSTALL THE AIR LINE BY PRESSING THE LINE FIRMLY INTO THE FITTING UNTIL FIRMLY SEATED. (FIGURES 26, 27)



FIGURE 26



FIGURE 27

6. RECONNECT THE STRUT'S ELECTRICAL CONNECTION AND CLIP INTO PLACE. (FIGURES 28, 29)



FIGURE 28

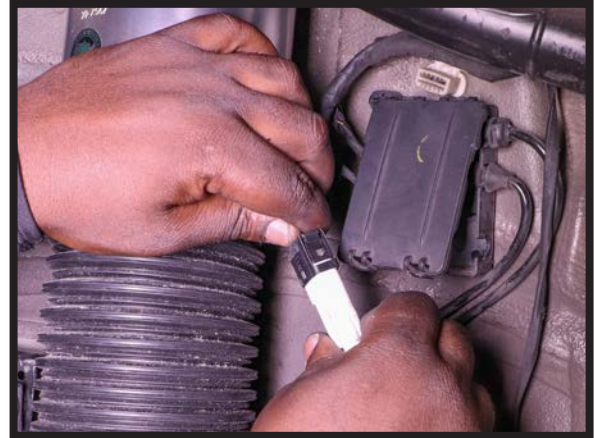


FIGURE 29

7. INSTALL THE THREE (3) TOP MOUNT NUTS FROM INSIDE THE VEHICLE AND TIGHTEN TO MANUFACTURER'S SPECIFICATIONS.



FIGURE 18

8. REINSTALL SPEAKER CAVITY FOAM (IF APPLICABLE).
9. REINSTALL THE REAR SPEAKER AND REAR SPEAKER COVER.
10. REINSTALL WHEEL WELL LINER.
11. REINSTALL WHEEL.
12. LOWER VEHICLE.
13. INSTALLATION COMPLETE.