

# Installation Manual

## AS-2685 ARNOTT REAR LEFT AIR STRUT FOR 2001-2008 BMW 7 SERIES W/EDC (E65, E66)



Congratulations on your purchase of an Arnett® air suspension product. We at Arnett Incorporated are proud to offer a high quality product at the industry's most competitive pricing. Thank you for your confidence in us and our product.

Proper installation is essential to experience and appreciate the benefits of this system. Please take a moment to review these installation instructions before you begin to install these components on your vehicle. The removal and installation of air suspension products should only be performed by a fully qualified, ASE Certified, professional.

It is equally important to be aware of all necessary safety measures while installing your new Air Suspension System. This includes proper lifting and immobilizing of the vehicle and isolation of any stored energy to prevent personal injury or property damage.

## "Engineered to Ride, Built to Last®"



**WARNING:** *The air suspension system is under pressure (up to 10 bar, or 150 lbf/in). Verify pressure has been relieved and disconnect power to the air suspension system prior to disassembly. Do not allow dirt or grease to enter the system. Always wear standard hand, ear, and eye protection when servicing the air suspension system.*

### KIT CONTAINS:

#### PARTS LIST

P/N	QTY	DESCRIPTION
21-7995	1	ARNOTT REAR LEFT AIR STRUT
21-7996	1	INSTRUCTION PACKET

Arnett® is committed to the quality of its products. If you have a question or problem with any Arnett product, please contact Arnett by calling **800-251-8993** during normal business hours or email [techassistance@arnottinc.com](mailto:techassistance@arnottinc.com).

## GENERAL INFORMATION:

Reading this manual signifies your agreement to the terms of the general release, waiver of liability, and hold harmless agreement, the full text of which is available at [www.arnottinc.com](http://www.arnottinc.com).

- Not to be stored below 5°F (-15°C) or above 122°F (50°C).
- Avoid damage to air lines and cables.
- Removal and installation is only to be performed by fully qualified personnel.
- Use car manufacturer's diagnostic software.

**CAUTION:** Damage to the vehicle and air suspension system can be incurred if work is carried out in a manner other than specified in the instructions or in a different sequence.



To avoid the possibility of short circuits while working with electric components consult your owner's manual on how to disconnect your battery.



Consult your vehicle owner's manual, service manual, or car dealer for the correct jacking points on your vehicle and for additional care, safety and maintenance instructions. Under no circumstances should any work be completed underneath the vehicle if it is not adequately supported, as serious injuries and death can occur.

## AIR STRUT REMOVAL

1. BEGIN BY REMOVING THE TRUNK FLOOR AND ALL COVER PANELS. (FIGURE A, B, C, D, E, F, G, H)



FIGURE A



FIGURE B

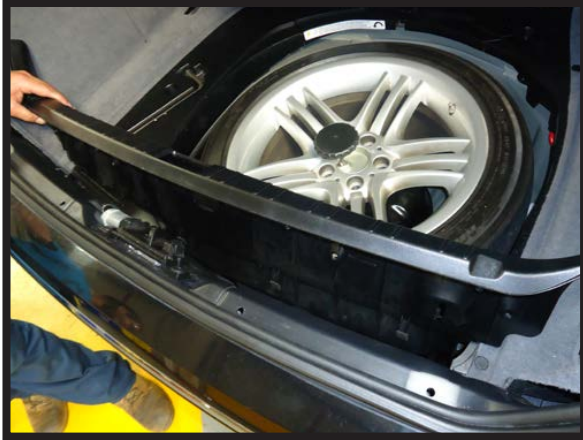


FIGURE C



FIGURE D



FIGURE E



FIGURE F



FIGURE G



FIGURE H

2. LOCATE AND REMOVE THE TWO (2) AIR CONDITIONING DUCTS ALONG THE TOP EDGE OF THE TRUNK SPACE. (FIGURE I, J)



FIGURE I



FIGURE J

3. LOCATE AND REMOVE THE PROTECTIVE FOAM INSULATION COVERING THE TOP OF THE STRUT TOWER. (FIGURE K)



FIGURE K

4. REMOVE THE THREE (3) TOP MOUNTING NUTS AND DISCONNECT THE ELECTRICAL PLUG. (FIGURE L, M)



FIGURE L



FIGURE M

5. SET STEERING TO STRAIGHT AHEAD.
6. RAISE VEHICLE.
7. REMOVE REAR WHEEL. (FIGURE N)



FIGURE N

8. LOOSEN AND REMOVE THE SWAY BAR END LINK NUT FROM THE BOTTOM OF THE LOWER CONTROL ARM AND DISCONNECT. (FIGURE O)

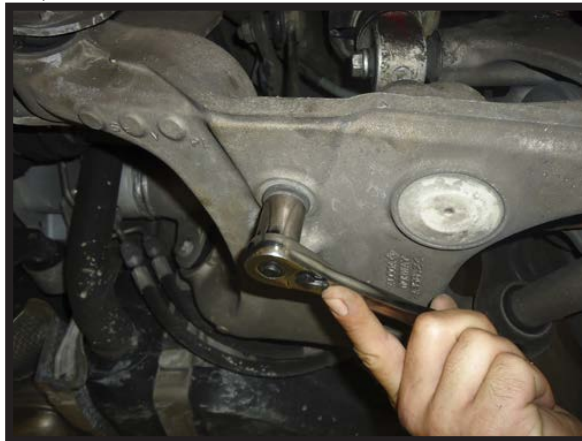


FIGURE O

9. REMOVE THE SENSOR WIRE FROM THE REAR TRAILING ARM BRACKET. (FIGURE P)



FIGURE P

10. LOOSEN AND REMOVE THE REAR TRAILING ARM'S BALL JOINT NUT AND SEPARATE FROM THE SPINDLE ASSEMBLY. (FIGURE Q)

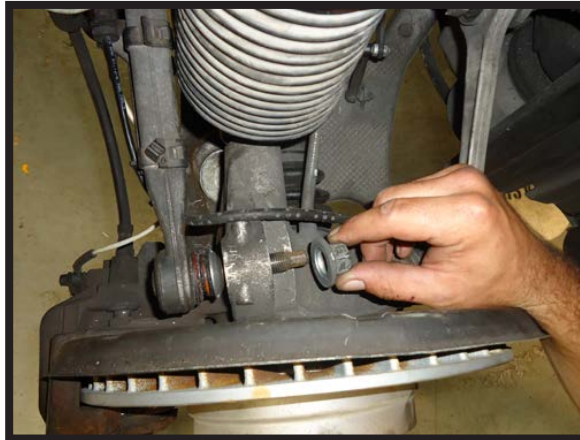


FIGURE Q

11. LOOSEN AND REMOVE THE INNER REAR TRAILING ARM NUT AND BOLT. (FIGURE R)



FIGURE R

12. REMOVE THE REAR TRAILING ARM FROM THE VEHICLE. (FIGURE S)



FIGURE S

13. LOOSEN AND REMOVE THE LOWER AIR STRUT MOUNTING BOLT. (FIGURE T)



FIGURE T

14. LOWER THE AIR STRUT FROM ITS MOUNTING LOCATION AND REMOVE THE AIR LINE. REMOVE THE AIR LINE FITTING FROM THE AIR HOSE AND DISCARD. (FIGURE U)



FIGURE U

15. REMOVE THE AIR STRUT FROM THE VEHICLE.

## AIR STRUT INSTALLATION



*Tighten all nuts and bolts to manufacturer's specifications during the installation process.*



*Do not remove the air fitting from the air strut. Doing so may cause damage and/or void warranty. Remove the white shipping pin from the new air fitting and insert the air line until fully seated.*

1. INSTALLATION IS IN REVERSE ORDER OF AIR STRUT REMOVAL.